

BOISE, IDAHO

AL-57 (FAA)

25163

APP CRS	Rwy Ldg	10000
282°	TDZE	2871
	Apt Elev	2871

RNAV (RNP) X RWY 28R

BOISE AIR TRML/GOWEN FLD (BOI)

T
A NA For uncompensated Baro-VNAV systems, procedure NA below -14°C (7°F) or above 52°C (126°F). RF required. GPS required.

MISSED APPROACH: Climb to 6000
on track 282° to ATTOL and hold.

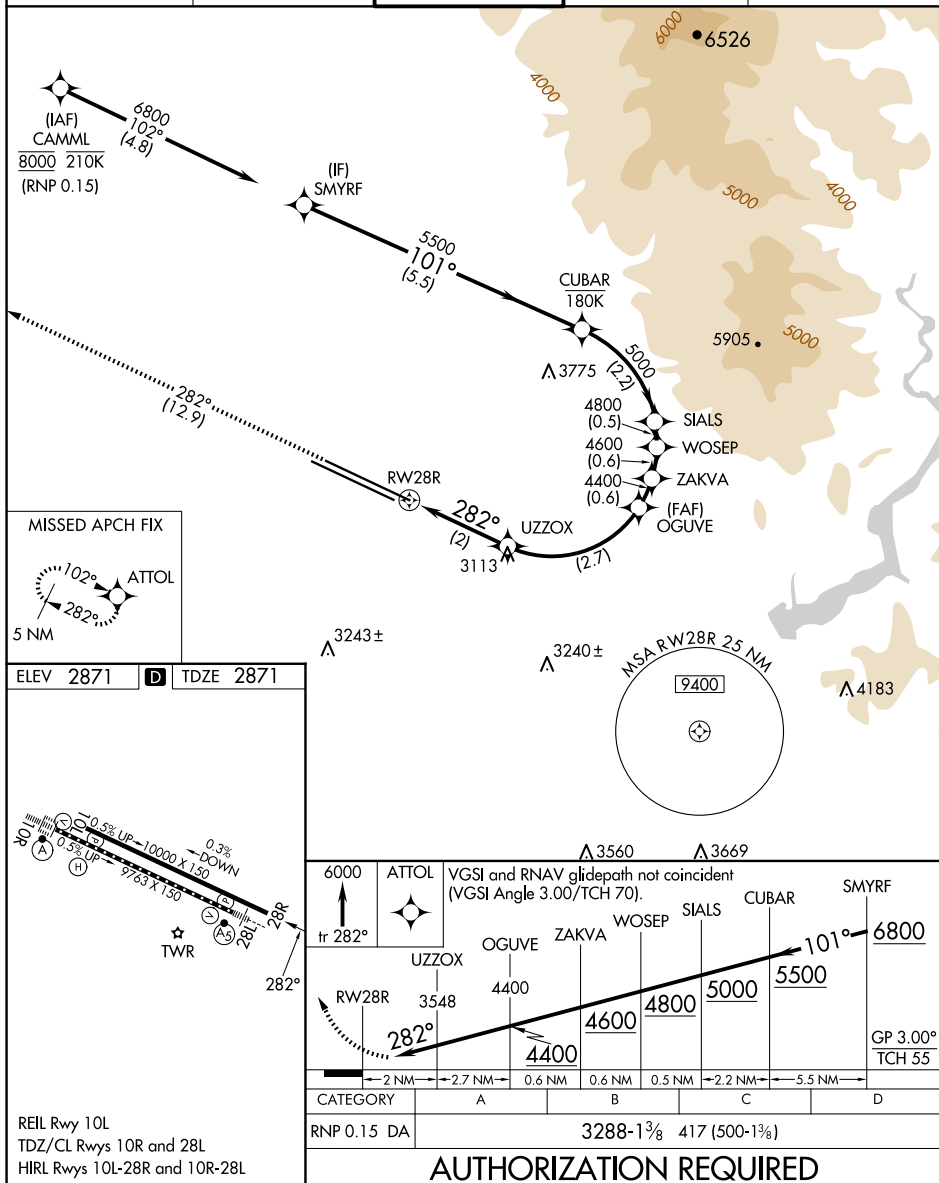
D-ATIS
3.9 290.4

BIG SKY APP CON
119.6 269.4

BOISE TOWER
118.1 257.8

GND CON
121.7 348.6

CLNC DEL
125.9 323.2



BOISE, IDAHO
Orig-A 07DEC17

43°34'N-116°13'W

BOISE AIR TRML/GOWEN FLD (BOI)
RNAV (RNP) X RWY 28R

NW-1, 10 JUL 2025 to 07 AUG 2025

NW-1, 10 JUL 2025 to 07 AUG 2025