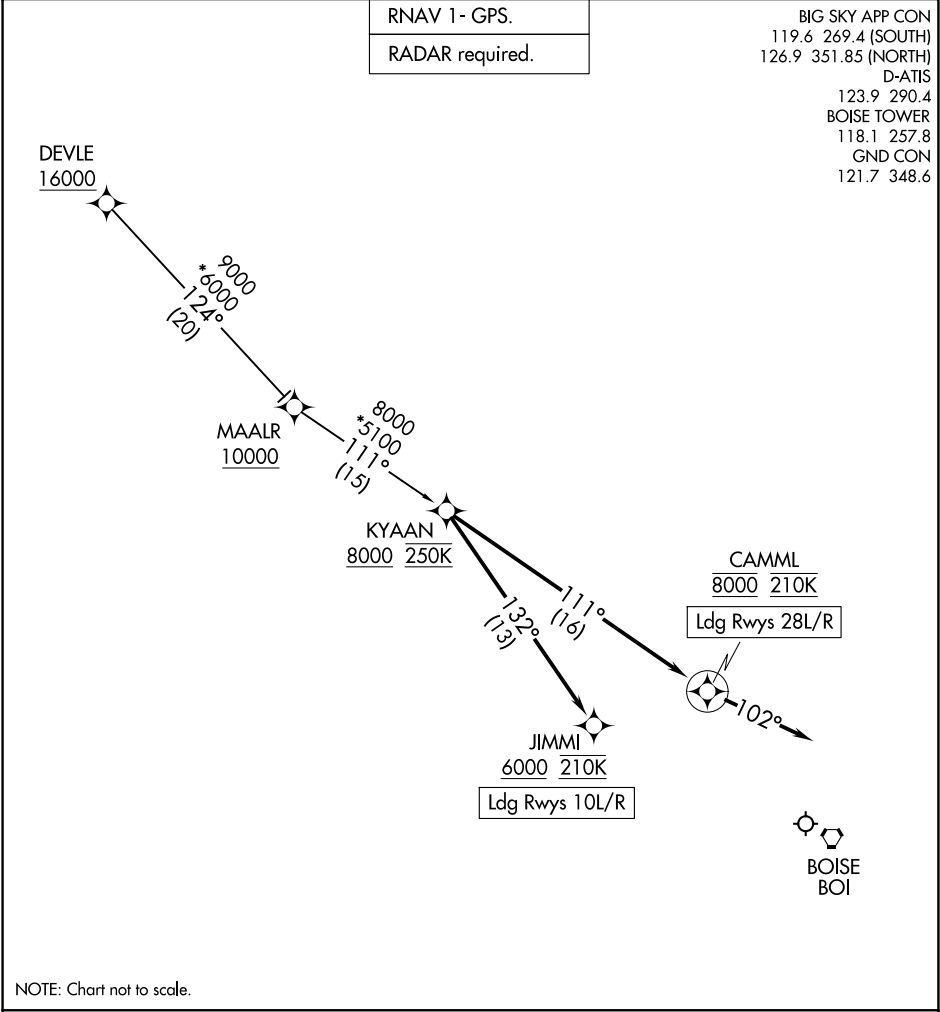


RNAV 1 - GPS.
RADAR required.

BIG SKY APP CON
119.6 269.4 (SOUTH)
126.9 351.85 (NORTH)
D-ATIS
123.9 290.4
BOISE TOWER
118.1 257.8
GND CON
121.7 348.6



ARRIVAL ROUTE DESCRIPTION
<u>DEVLE TRANSITION (DEVLE.KYAAN4)</u>
<u>LANDING RUNWAYS 10L/R:</u> From KYAAN on track 132° to cross JIMMI at or above 6000 and at 210K. Expect assigned approach or RADAR vectors to final approach course.
<u>LANDING RUNWAYS 28L/R:</u> From KYAAN on track 111° to cross CAMML at 8000 and at 210K, then on track 102°. Expect assigned approach or RADAR vectors to final approach course.