

LOC/DME I-BOI	APP CRS	Rwy Ldg	10R	10L
111.1	102°	9763	10000	
Chan 48		TDZE	2836	2844
		Apt Elev	2872	2872

ILS Y or LOC Y RWY 10R  
BOISE AIR TRML/GOWEN FLD (BOI)

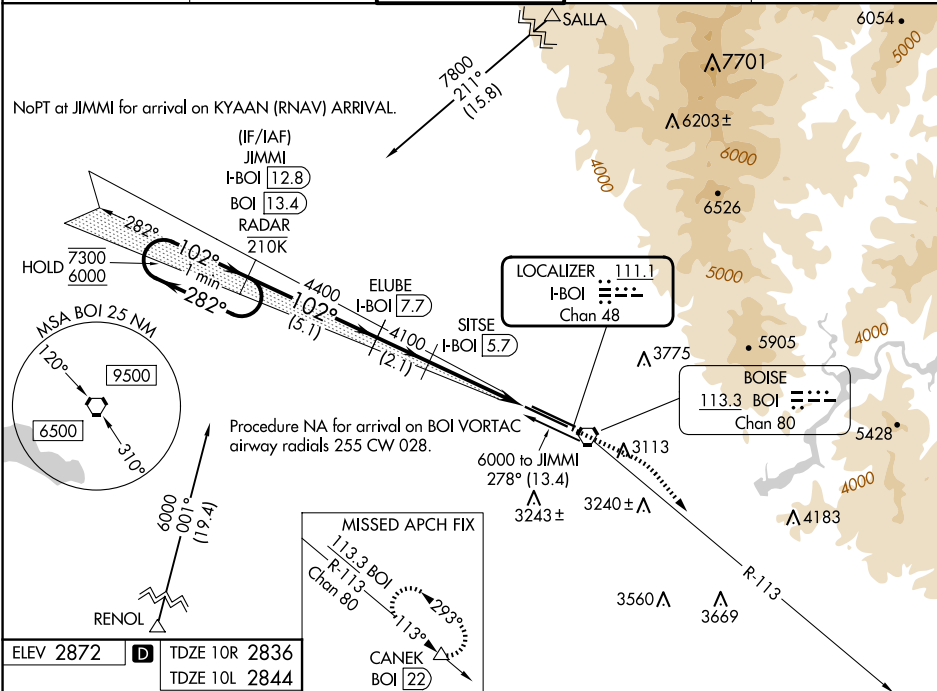
DME required. RNAV 1 - GPS. From SALLA and RENOL.

For inop ALS, increase S-LOC 10R Cats C/D visibility to RVR 5500. Circling NA north of Rwy 10L-28R.

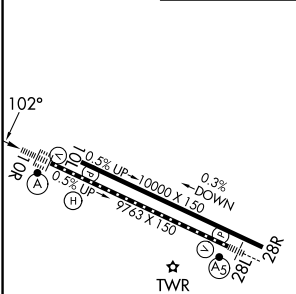
ALSIF-2  
Rwy 10R

MISSED APPROACH: Climb to 3300 then climbing right turn to 7300 on BOI VORTAC R-113 to CANEK/BOI VORTAC 22 DME and hold.

D-ATIS	BIG SKY APP CON	BOISE TOWER	GND CON	CLNC DEL
123.9 290.4	119.6 269.4	118.1 257.8	121.7 348.6	125.9 323.2



ELEV 2872	TDZE 10R 2836
	TDZE 10L 2844



VGSI and ILS glidepath not coincident (VGSI Angle 3.00/TCH 64).			
One Minute Holding Pattern			
JIMMI I-BOI 12.8 BOI 13.4 RADAR			
ELUBE I-BOI 7.7 SITSE I-BOI 5.7 I-BOI 2.8 I-BOI 1.8			
GS 3.00° TCH 54 Use I-BOI DME when on the localizer course.			
5.1 NM 2.1 NM 2.9 NM 1 NM			
CATEGORY	A	B	C
S-ILS 10R	3036/18 200 (200-½)		
S-LOC 10R	3200/24	364 (400-½)	3200/35 364 (400-¾)
SIDESTEP 10L	3220-1	376 (400-1)	3220-1½ 376 (400-1½)
CIRCLING	3440-1 568 (600-1)		3640-2¼ 768 (800-2¼)
			3820-3 948 (1000-3)

REIL Rwy 10L  
TDZ/CL Rwy 10R and 28L  
HIRL Rwy 10L-28R and 10R-28L