

LOC/DME I-BOI <b><u>111.1</u></b> Chan <b>48</b>	APP CRS <b>102°</b>	Rwy Ldg <b>9763</b> TDZE <b>2836</b> Apt Elev <b>2872</b>
--	------------------------	---

ILS Y RWY 10R (SA CAT I)  
BOISE AIR TRML/GOWEN FLD (BOI)

DME required. RNAV 1 - GPS. From SALLA and RENOL.

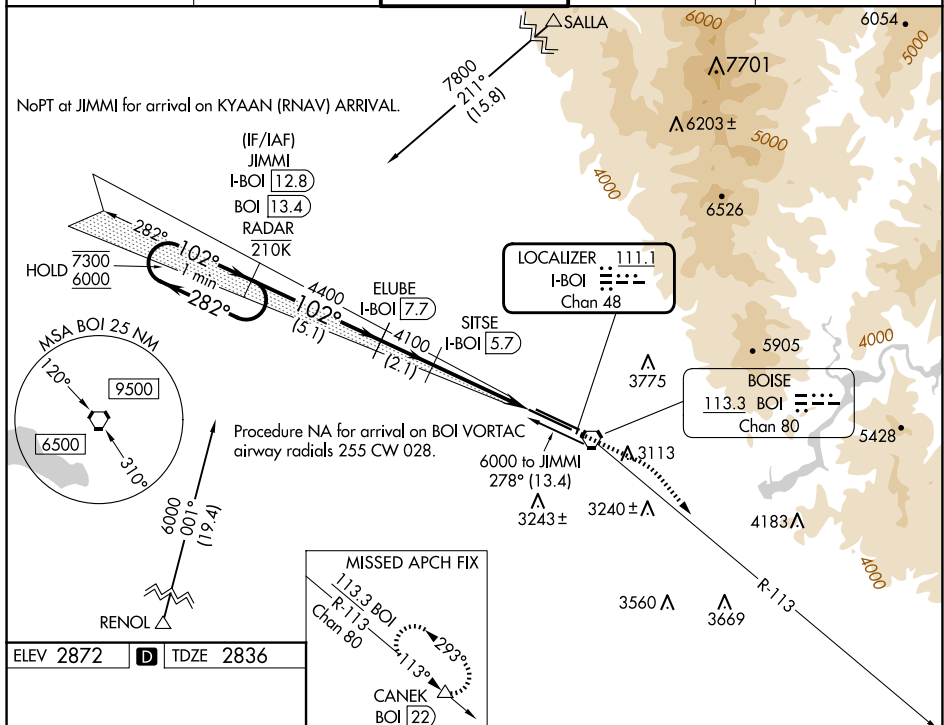
**T** Requires specific OPSPEC, MSPEC, or LOA approval and use of HUD to DH.

ALSF-2

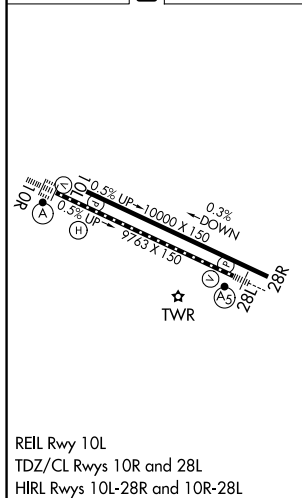
**MISSED APPROACH:** Climb to 3300 then climbing right turn to 7300 on BOI VORTAC R-113 to CANEK/BOI VORTAC 22 DME and hold.

D-ATIS	BIG SKY APP CON	BOISE TOWER	GND CON	CLNC DEL
123.9 290.4	119.6 269.4	118.1 257.8	121.7 348.6	125.9 323.2

NoPT at JIMM for arrival on KYAAN (RNAV) ARRIVAL.



ELEV 2872	<b>D</b>	TDZE 2836
-----------	----------	-----------



VGSI and ILS glidepath not coincident (VGSI Angle 3.00/TCH 64).

One Minute Holding Pattern

JMMI I-BOI 12.8 BOI 13.4 RADAR

ELUBE I-BOI 7.7

SITSE I-BOI 5.7

Use I-BOI DME when on the localizer course.

7300 ← 282° 102° → 6000

GS 3.00° TCH 54

4400 4100 4100 978'

5.1 NM 2.1 NM 3.8 NM

CATEGORY	A	B	C	D
S-ILS 10R	RA 181/14 150 DA 2986			

SA CATEGORY I ILS - SPECIAL AIRCREW  
& AIRCRAFT CERTIFICATION REQUIRED