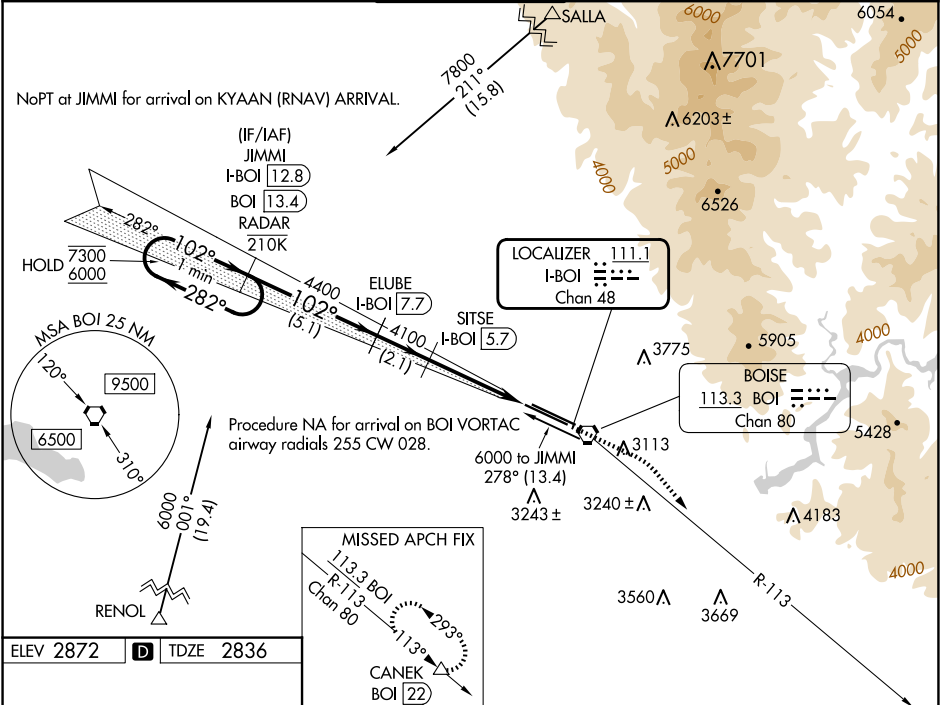


LOC/DME I-BOI	APP CRS	Rwy Ldg	9763
111.1	102°	TDZE	2836
Chan 48		Apt Elev	2872

ILS Y RWY 10R (CAT II & III)
BOISE AIR TRML/GOWEN FLD (BOI)

DME required. RNAV 1 - GPS. From SALLA and RENOL.	ALS F-2	MISSED APPROACH: Climb to 3300 then climbing right turn to 7300 on BOI VORTAC R-113 to CANEK/BOI VORTAC 22 DME and hold.
CAT II: RVR 1000 authorized with specific OPSPEC, MSPEC, or LOA approval and use of autoland or HUD to touchdown.		

D-ATIS 123.9 290.4	BIG SKY APP CON 119.6 269.4	BOISE TOWER 118.1 257.8	GND CON 121.7 348.6	CLNC DEL 125.9 323.2
-----------------------	--------------------------------	----------------------------	------------------------	-------------------------



REIL Rwy 10L
TDZ/CL Rwy 10R and 28L
HIRL Rwy 10L-28R and 10R-28L

VGSI and ILS glidepath not coincident (VGSI Angle 3.00/TCH 64).

One Minute Holding Pattern

JIMMI I-BOI 12.8 BOI 13.4 RADAR

ELUBE I-BOI 7.7

SITSE I-BOI 5.7

Use I-BOI DME when on the localizer course.

7300 6000 282° 102° 102° 4400 4100 4100 978'

GS 3.00° TCH 54

5.1 NM 2.1 NM 3.8 NM

CATEGORY	A	B	C	D
S-ILS 10R	CAT II RA 124/12 100 DA 2936			
S-ILS 10R	CAT III RVR 03			

CATEGORY II & III ILS - SPECIAL AIRCREW & AIRCRAFT CERTIFICATION REQUIRED

NW-1, 10 JUL 2025 to 07 AUG 2025

NW-1, 10 JUL 2025 to 07 AUG 2025