

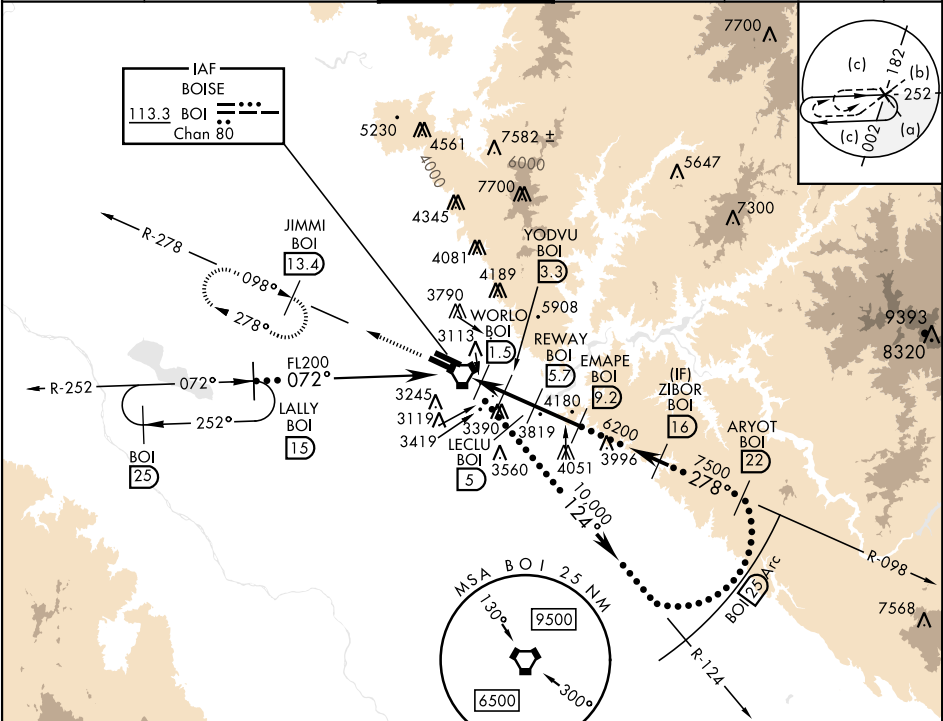
BOISE, IDAHO

VORTAC BOI 113.3 Chan 80	APCH CRS 278°	Rwy Idg 28L 9762 28R 2858 28R 2872	28R 9999 2872
--	-------------------------	--	--------------------------------

HI-VOR Z or TACAN Z RWY 28L

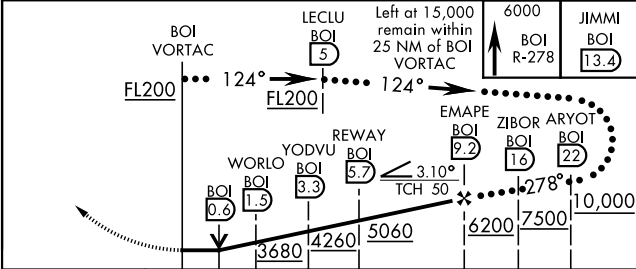
[USAF]
BOISE AIR TERMINAL (GOWEN FLD) (KBOI)

DME required * When ALS inop, increase vis to 1½ miles. ** Circling not authorized N of Rwy 10L-28R.		MALSR 	MISSED APPROACH: Climb to 6000 on BOI VORTAC R-278 to JIMMI/13.4 DME and hold.		
ATIS 123.9 290.4	BIG SKY APP CON 119.6 269.4	BOISE TOWER 118.1 257.8	GND CON 121.7 348.6	CLNC DEL 125.9 323.2	ASOS

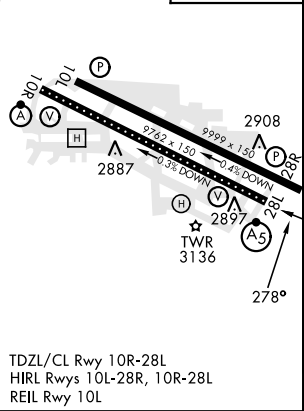


EMERG SAFE ALT 100 NM 14,000

ELEV	2872	TDZE 28L	2858
		TDZE 28R	2872



CATEGORY	C	D	E
S-28L *	3380/55	522	(600-1)
SIDESTEP RWY 28R	3380-1½ 508 (600-1½)	3380-2½ 948 (1000-3)	508 (600-2½) 3880-3 1008 (1100-3)
CIRCLING **	3620-2¼ 748 (800-2¼)	3820-3 948 (1000-3)	3880-3 1008 (1100-3)



BOISE, IDAHO

43°34'N-116°13'W

BOISE AIR TERMINAL (GOWEN FLD) (KBOI)

Amtd 4 08SEP22

HI-VOR Z or TACAN Z RWY 28L