

BOISE, IDAHO

HI-VOR or TACAN RWY 10R

VORTAC BOI 113.3 Chan 80	APCH CRS 098°	Rwy Idg TDZE Arpt Elev 9762 2836 2872
--------------------------------	------------------	--

[USAF]

BOISE AIR TERMINAL (GOWEN FLD)

(KBOI)

DME required

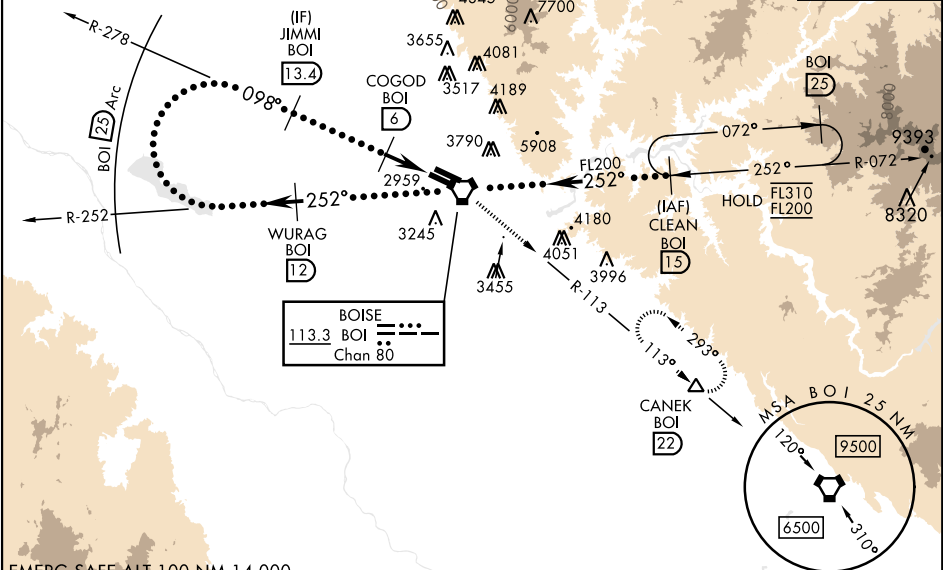
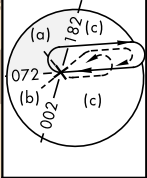
ALSF-2

MISSED APPROACH: Climb to 7300 on BOI  
VORTAC R-113 to CANEK/22 DME and hold.

★ When ALS inop, increase RVR to 60 and  
vis to 1¼ miles.

ATIS 123.9 290.4	BIG SKY APP CON 119.6 269.4	BOISE TOWER 118.1 257.8	GND CON 121.7 348.6	CLNC DEL 125.9 323.2	ASOS
---------------------	--------------------------------	----------------------------	------------------------	-------------------------	------

★★ Circling not authorized N of Rwy 10L-28R.



EMERG SAFE ALT 100 NM 14,000

7300 ↑ BOI R-113	CANEK △	VGSI and descent angles not coincident (VGSI Angle 3.0/TCH 64).	ELEV 2872	TDZE 2836
Right at 12,000 remain within 25 NM of BOI VORTAC	WURAG BOI 12	BOI VORTAC	CLEAN BOI 15	
JIMMI BOI 13.4	COGOD BOI 6	AVVUV BOI 2.7		
6000	4000	3.3 NM	0.3	
CATEGORY	C	D	E	
S-10R *	3220/35 384 (400-5%)	3220/35 384 (400-5%)		
✪ CIRCLING	3740-2¼ 768 (800-2¼)	3820-3 948 (1000-3)	3880-3 1008 (1100-3)	
TDZL/CL Rwy 10R-28L HIRL Rwys 10L-28R, 10R-28L REIL Rwy 10L				

BOISE, IDAHO

43°34'N-116°13'W

BOISE AIR TERMINAL (GOWEN FLD)

(KBOI)

Amtd 2 08SEP22

HI-VOR or TACAN RWY 10R