

BLYTHE, CALIFORNIA

AL-53 (FAA)

24081

WAAS CH <b>45626</b> <b>W26A</b>	APP CRS <b>246°</b>	Rwy Idg <b>6543</b> TDZE <b>396</b> Apt Elev <b>400</b>
--	------------------------	---

## RNAV (GPS) RWY 26

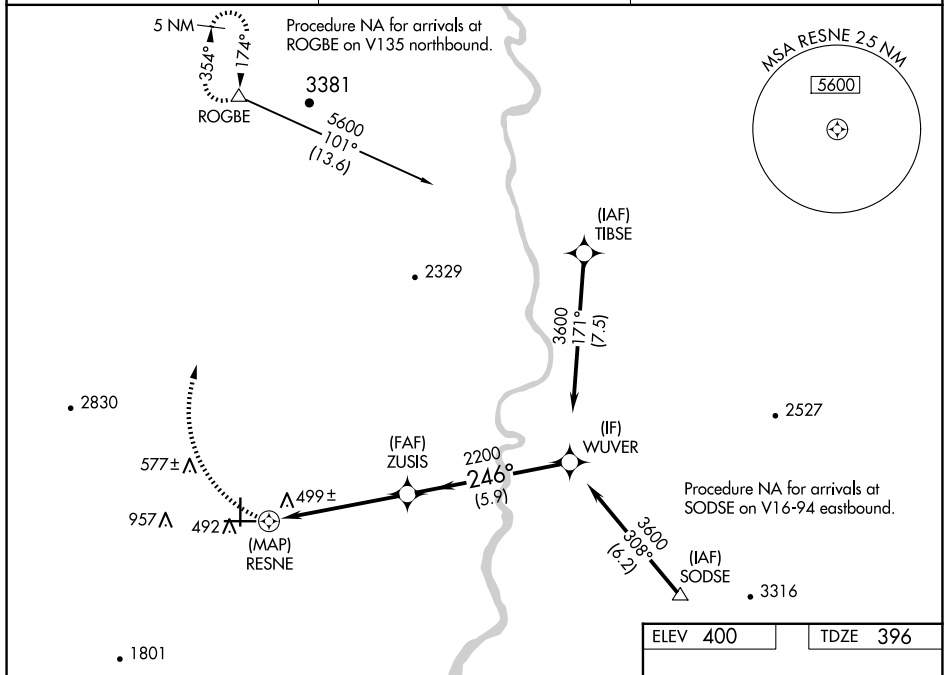
BLYTHE (BLH)

**T  
A**

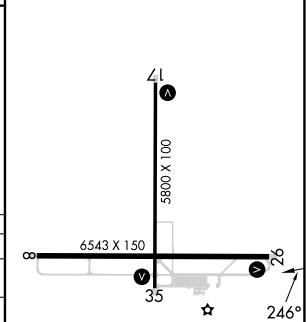
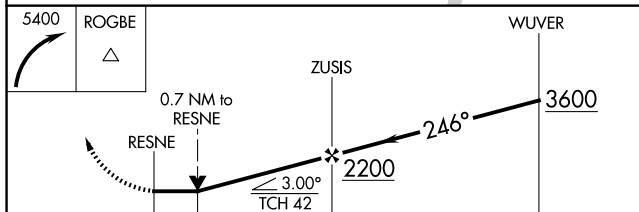
When local alimeter setting not received, procedure NA.  
DME/DME RNP-0.3 NA. Helicopter visibility reduction below  $\frac{3}{4}$  SM NA.  
#Missed approach requires a minimum climb of 375 feet per NM to 3500.  
\*Missed approach requires a minimum climb of 345 feet per NM to 3500.

**MISSED APPROACH:** Climbing right turn to 5400 direct ROGBE and hold, continue climb-in-hold to 5400.

ASOS <b>120.175</b>	LOS ANGELES CENTER <b>128.15 285.6</b>	UNICOM <b>122.8 (CTAF) 0</b>
------------------------	---	---------------------------------



ELEV 400		TDZE 396
----------	--	----------



	0.5	0.7	4.4 NM		5.9 NM		
CATEGORY	A		B		C		D
*LP MDA	800-1		404 (400-1)		800-1½		404 (400-1½)
LP MDA	1940-1¼ 1544 (1600-1¼)		1940-1½ 1544 (1600-1½)		1940-3		1544 (1600-3)
#LNAV MDA	800-1		404 (400-1)		800-1½		404 (400-1½)
LNAV MDA	2060-1¼ 1664 (1700-1¼)		2060-1½ 1664 (1700-1½)		2060-3		1664 (1700-3)
CIRCLING	2060-1¼ 1660 (1700-1¼)		2060-1½ 1660 (1700-1½)		2060-3		1660 (1700-3)

MIRL Rwy 8-26 and 17-35 **L**

BLYTHE, CALIFORNIA

33°37'N-114°43'W

BLYTHE (BLH)

## RNAV (GPS) RWY 26

Amdt 1A 31MAR16

SW-3, 10 JUL 2025 to 07 AUG 2025