

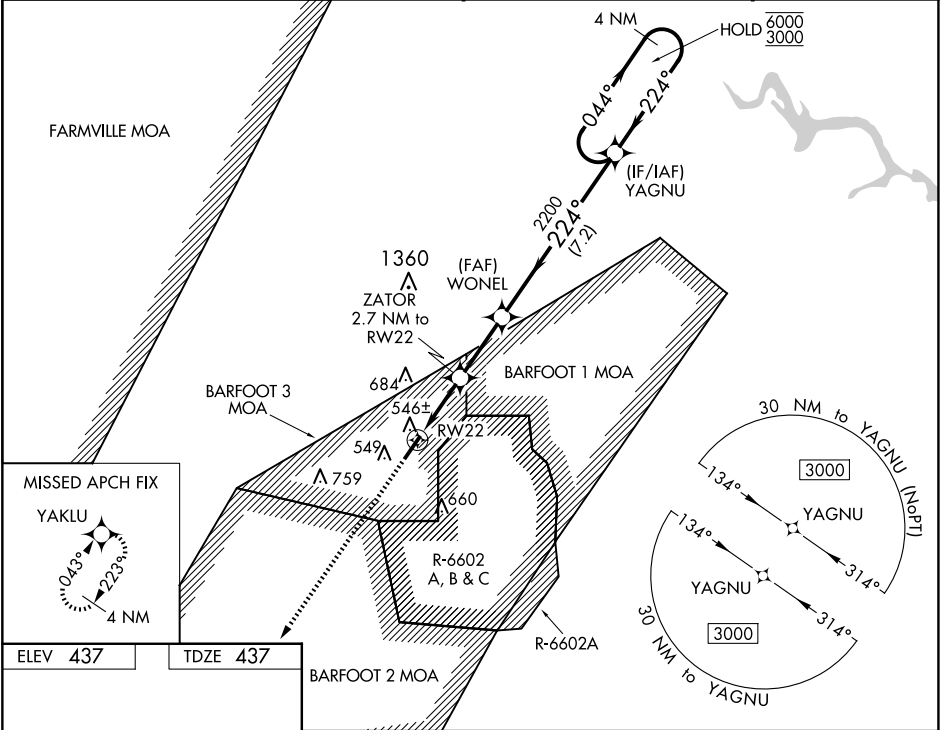
WAAS CH 53734 W22A	APP CRS 224°	Rwy Ldg 5333 TDZE 437 Apt Elev 437
--	------------------------	---

RNAV (GPS) RWY 22

ALLAN C PERKINSON/BLACKSTONE AAF (BKT')

RNP APCH - GPS.	MISSED APPROACH: Climb to 3000 direct YAKLU and hold.
-----------------	---

ATIS 119.225	WASHINGTON CENTER 118.75 377.1	BLACKSTONE TOWER ★ 134.7 (CTAF) 0 292.7	GND CON 127.625
------------------------	--	---	---------------------------



ELEV 437 TDZE 437		YAKLU		WONEL		YAGNU		4 NM Holding Pattern	
MIRL Rwy 4-22 0		3000		2200		2200		GP 3.00° TCH 60	
0.7% UP 5333 X 150		1.4 NM		1.3		2.7 NM		7.2 NM	
CATEGORY		A		B		C		D	
LPV DA		698-1		261 (300-1)				NA	
LNAV/VNAV DA		698-1		261 (300-1)				NA	
LNAV MDA		940-1		503 (600-1)		940-1 3/8 503 (600-1 3/8)		NA	
CIRCLING		940-1		503 (600-1)		1000-1 1/2 563 (600-1 1/2)		NA	

NE-3, 10 JUL 2025 to 07 AUG 2025

NE-3, 10 JUL 2025 to 07 AUG 2025