

WAAS CH 82014 W06A	APP CRS 058°	Rwy Idg 12007 TDZE 606 Apt Elev 650
----------------------------------------	------------------------	----------------------------------------------------------------

RNAV (GPS) Y RWY 6

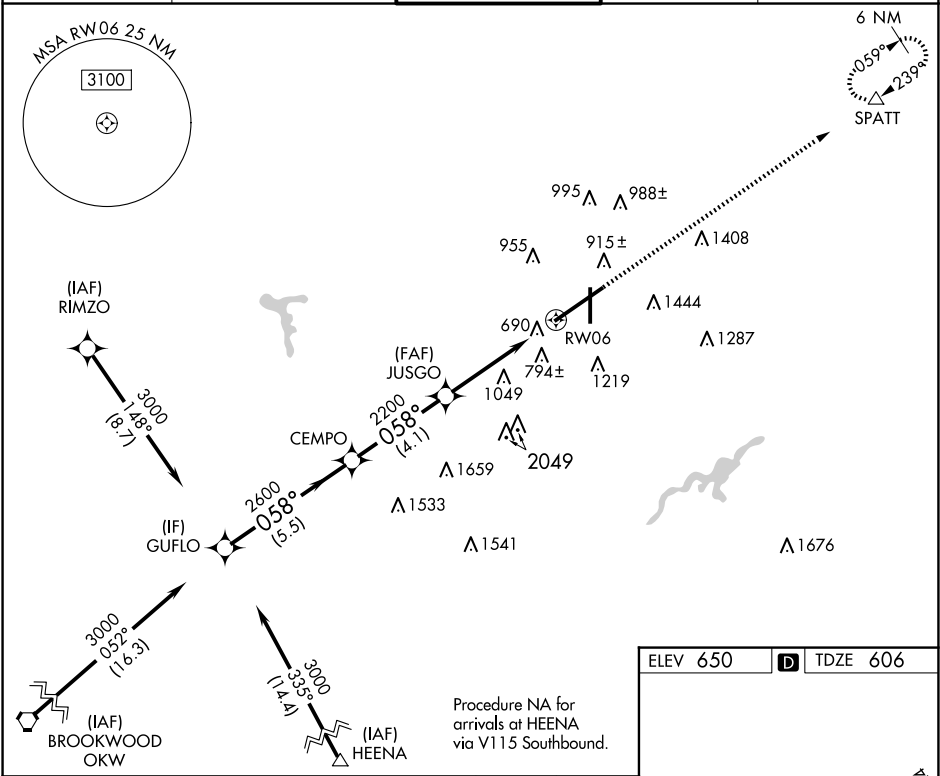
BIRMINGHAM-SHUTTLESWORTH INTL (BHM)

RNP APCH.
▼ For uncompensated Baro-VNAV systems, LNAV/VNAV NA below -16°C (4°F) or above 47°C (116°F).
▲

ALSIF-2
A

MISSED APPROACH: Climb to 3300 direct SPATT and hold.

ATIS 119.4 270.1	BIRMINGHAM APP CON 123.8 256.8	BIRMINGHAM TOWER 119.9 317.725	GND CON 121.7 348.6	CLNC DEL 125.675 305.2
----------------------------	------------------------------------------	------------------------------------------	-------------------------------	----------------------------------



GUFLO VGSi and RNAV glidepath not coincident (VGSi Angle 3.00/TCH 68).

3300 SPATT

Procedure Turn NA

GP 3.00° TCH 53

3000 058° 2600 2200

5.5 NM 4.1 NM 2.4 NM 2.4 NM

Procedure NA for arrivals at HEENA via V115 Southbound.

*RNAV only.

2.4 NM to RW06

RW06

CATEGORY	A	B	C	D
LPV DA	806/18		200 (200-½)	
LNAV/VNAV DA	1120/60		514 (500-1¼)	
LNAV MDA	1440/24 834 (800-½)	1440/40 834 (800-¾)	1440-2 834 (800-2)	1440-2¼ 834 (800-2¼)

