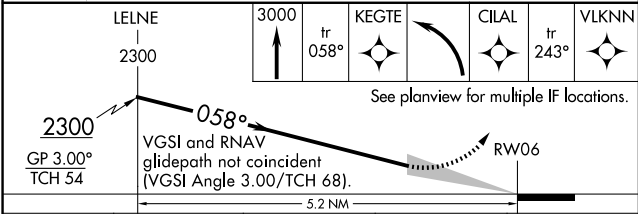
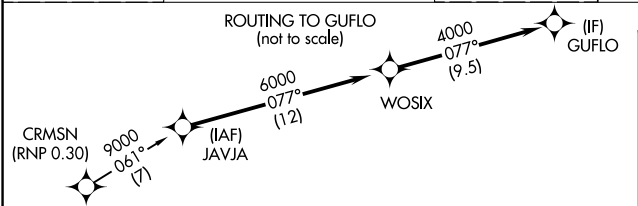
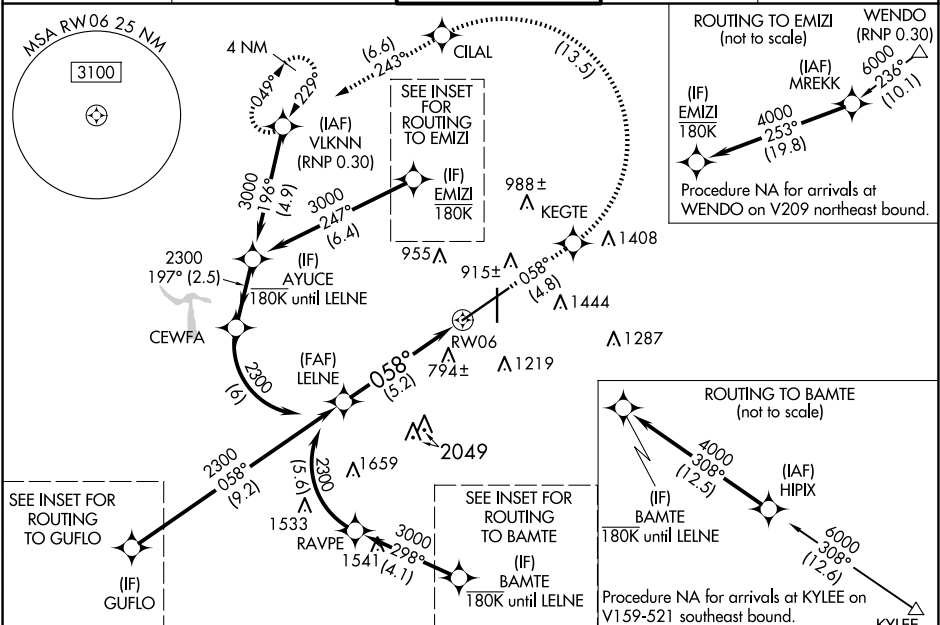


APP CRS	Rwy ldg	12007
058°	TDZE	606
	Apt Elev	650

RNAV (RNP) Z RWY 6  
BIRMINGHAM-SHUTTLESWORTH INTL (BHM)

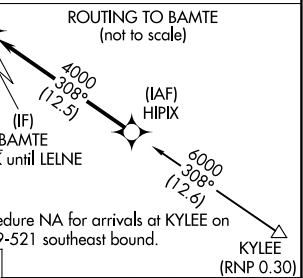
RNP AR APCH. RF required.	ALS-F-2
For uncompensated Baro-VNAV systems, procedure NA below -8°C or above 54°C.	MISSED APPROACH: Climb to 3000 on track 058° to KEGTE left turn to CILAL and track 243° to VLKNN and hold.

ATIS 119.4 270.1	BIRMINGHAM APP CON 123.8 256.8	BIRMINGHAM TOWER 119.9 317.725	GND CON 121.7 348.6	CLNC DEL 125.675 305.2
---------------------	-----------------------------------	-----------------------------------	------------------------	---------------------------

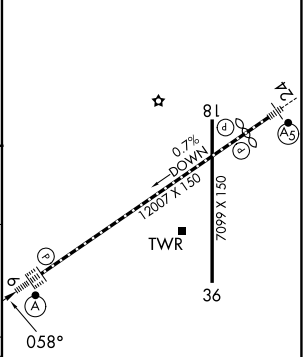


CATEGORY	A	B	C	D
RNP 0.30 DA		1138/55	532 (500-1)	

AUTHORIZATION REQUIRED



ELEV 650	TDZE 606
----------	----------



REIL Rwy 18 and 36  
TDZ/CL Rwy 6  
HIRL Rwy 6-24  
MIRL Rwy 18-36

SE-4, 10 JUL 2025 to 07 AUG 2025

SE-4, 10 JUL 2025 to 07 AUG 2025