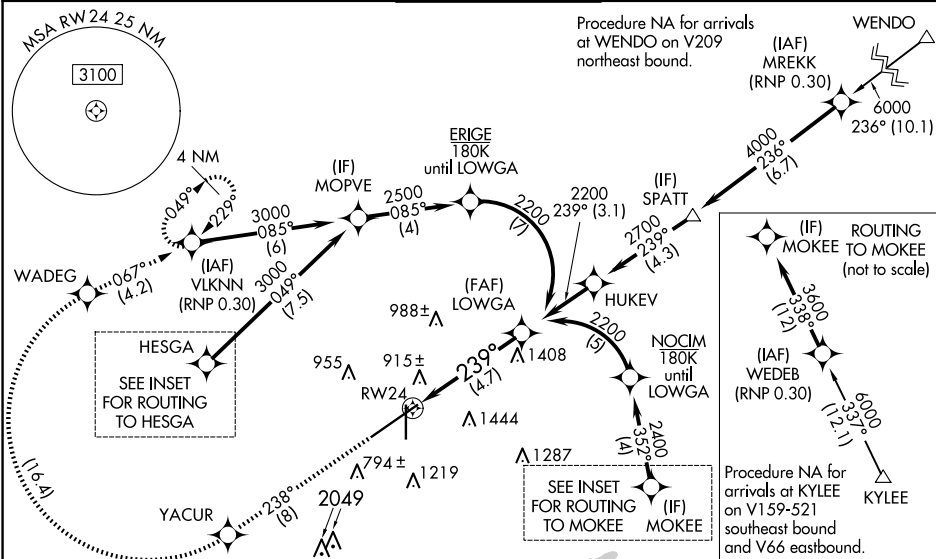


APP CRS	Rwy Idg	10801
239°	TDZE	641
	Apt Elev	650

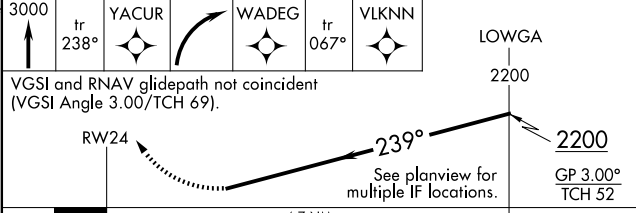
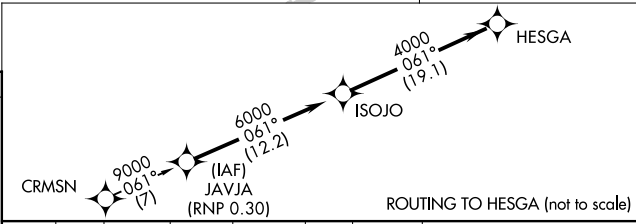
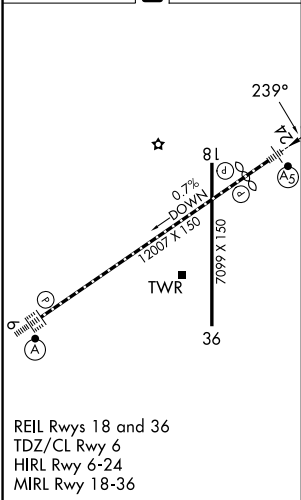
RNAV (RNP) Z RWY 24
BIRMINGHAM-SHUTTLESWORTH INTL (BHM)

RNP AR APCH. RF required. ▼ For uncompensated Baro-VNAV systems, procedure NA below -8°C or above 54°C. For inop ALS, increase RNP 0.15 all Cats visibility to 1 3⁄8 and increase RNP 0.30 all Cats visibility to 1 3⁄4 SM.	MALSR AS	MISSED APPROACH: Climb to 3000 on track 238° to YACUR then, right turn to WADEG, then on track 067° to VLKNN and hold.
--	-------------	--

ATIS 119.4 270.1	BIRMINGHAM APP CON 123.8 256.8	BIRMINGHAM TOWER 119.9 317.725	GND CON 121.7 348.6	CLNC DEL 125.675 305.2
---------------------	-----------------------------------	-----------------------------------	------------------------	---------------------------



ELEV 650	D	TDZE 641
----------	---	----------



CATEGORY	A	B	C	D
RNP 0.15 DA	1149-1	508 (500-1)		
RNP 0.30 DA	1243-1 3⁄8	602 (600-1 3⁄8)		

AUTHORIZATION REQUIRED

SE-4, 10 JUL 2025 to 07 AUG 2025

SE-4, 10 JUL 2025 to 07 AUG 2025