

VORTAC GPT 109.0 Chan 27	APCH CRS 266°	Rwy Idg TDZE Arpt Elev N/A N/A 33
--	-------------------------	---

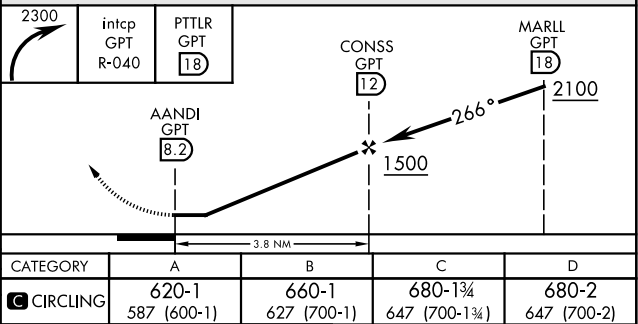
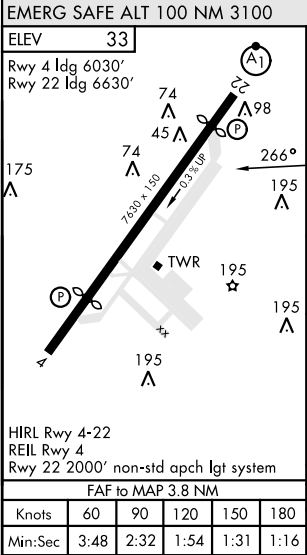
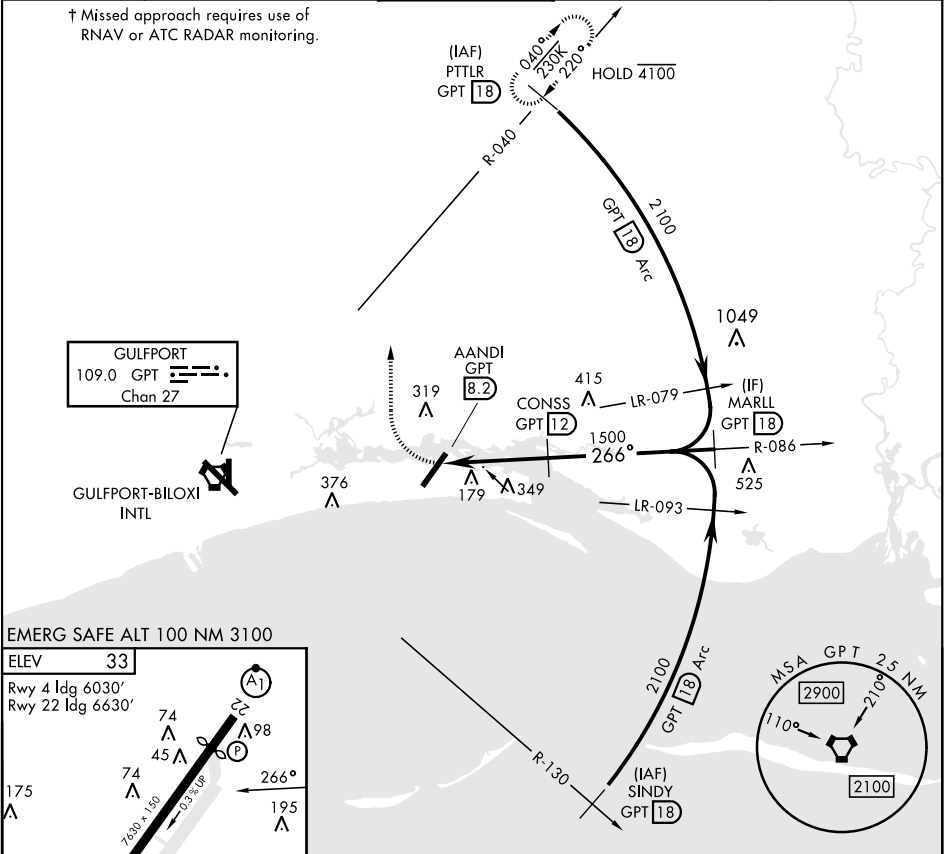
[USAF]

KEESLER AFB (KBIX)

† MISSED APPROACH: Climbing right turn to 2300 intcp GPT VORTAC R-040 to PTLR (R-040/18 DME) and hold.				
--	--	--	--	--

ATIS★ 281.55	GULFPORT APP CON★ 124.6 354.1 (130°- 309°) 127.5 254.25 (310°- 129°)	TOWER★ 120.75 269.075	GND CON★ 121.8 275.8	CLNC DEL 121.8 275.8
------------------------	--	---------------------------------	--------------------------------	--------------------------------

† Missed approach requires use of RNAV or ATC RADAR monitoring.



SC-4, 10 JUL 2025 to 07 AUG 2025

SC-4, 10 JUL 2025 to 07 AUG 2025