

RNAV (GPS) RWY 22

APCH CRS	Rwy Idg	6630
217°	THRE	17
	Arprt Elev	33

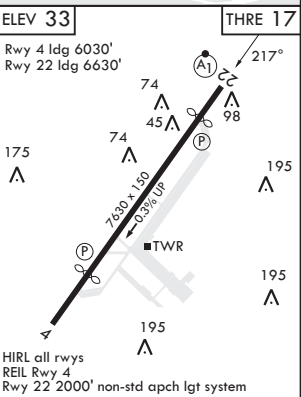
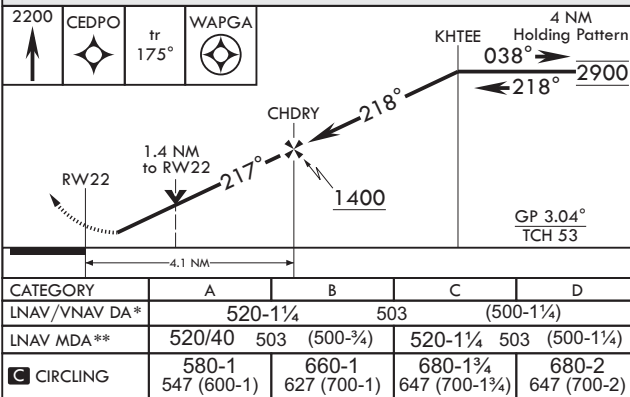
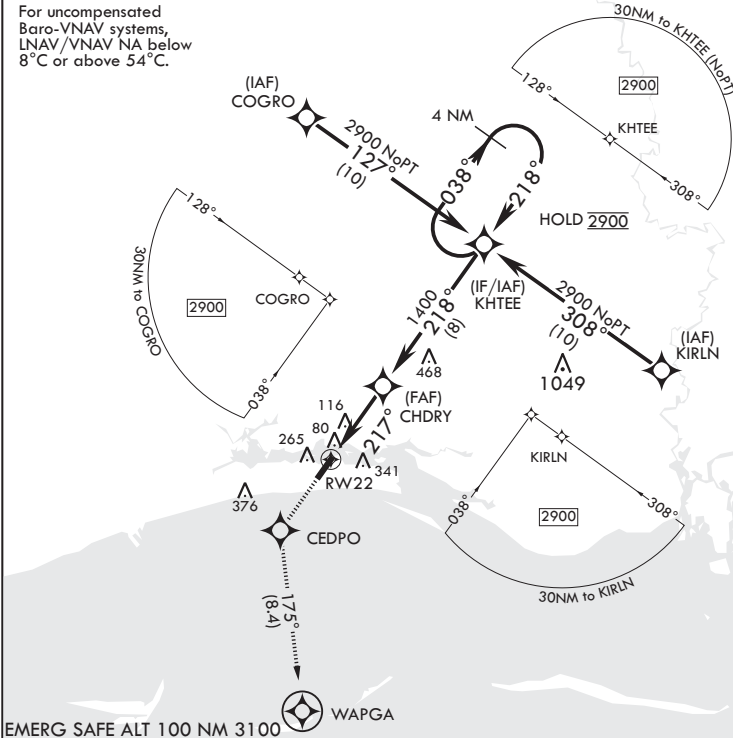
(USAF)

KEESLER AFB (KBIX)

RNP APCH	ALSF-1	MISSED APPROACH: Climb to 2200 direct CEDPO and track 175° to WAPGA. Expect ATC instructions.
▼ * When ALS inop, increase vis to 1 3/8 miles. ** When ALS inop, increase CAT AB RVR to 55, vis to 1 mile; CAT CD vis to 1 3/8 miles.		

ATIS★ 281.55	GULFPORT APP CON/DEP CON★ 124.6 354.1 130° - 309° 127.5 254.25 310° - 129°	TOWER★ 120.75 269.075	GND CON★ 121.8 275.8	CLNC DEL 121.8 275.8
-----------------	--	--------------------------	-------------------------	-------------------------

For uncompensated Baro-VNAV systems, LNAV/VNAV NA below 8°C or above 54°C.



RNAV (GPS) RWY 22

SC-4, 10 JUL 2025 to 07 AUG 2025

SC-4, 10 JUL 2025 to 07 AUG 2025