


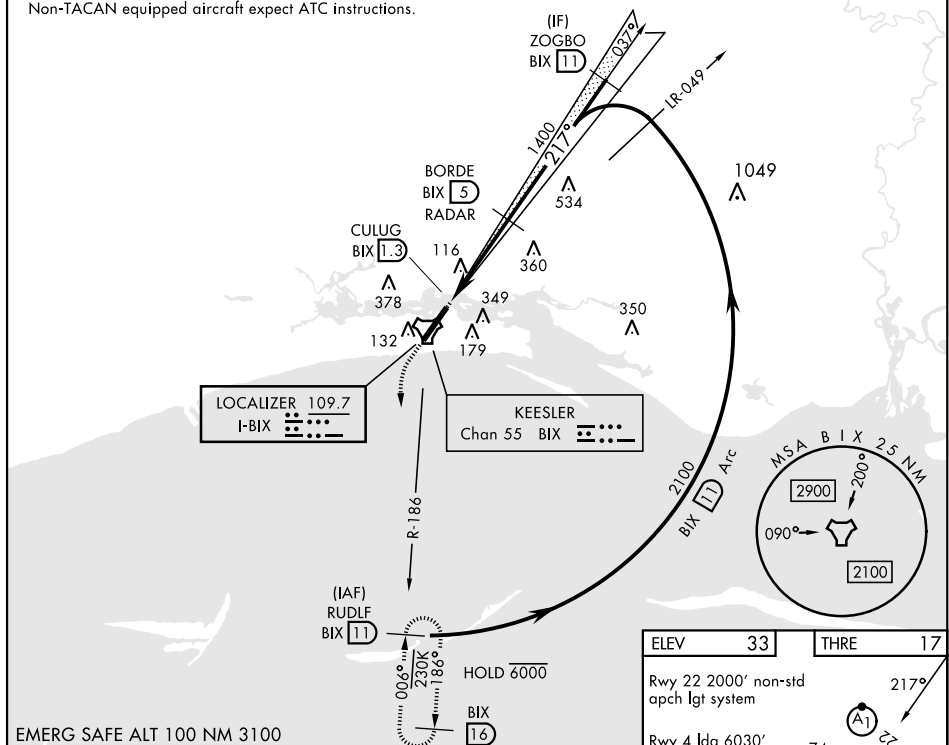


## ILS or LOC RWY 22

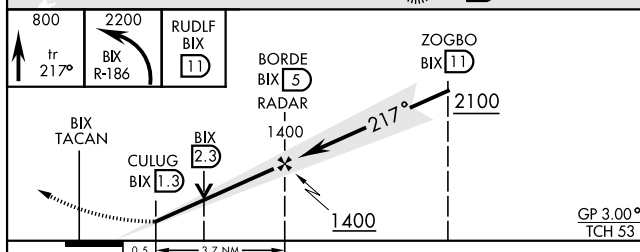
LOC I-BIX <b>109.7</b>	APCH CRS <b>217°</b>	Rwy Idg THRE Arpt Elev <b>6630</b> <b>17</b> <b>33</b>	[USAF]	KEESLER AFB (KBIX)
RADAR or DME required			ALSF-1	† MISSED APPROACH: Climb to 800 tracking 217°, upon reaching 800 turn left to intercept BIX TACAN R-186 climbing to 2200 to 11 DME (RUDLF) and hold.
 * When ALS inop, increase CAT AB RVR to 55, vis to 1 mile, CAT CD vis to 1 1/2 miles.			 	
ATIS ★ <b>281.55</b>	GULFPORT APP CON ★ <b>124.6 354.1</b> (130°- 309°) <b>127.5 254.25</b> (310°- 129°)		TOWER ★ <b>120.75 269.075</b>	GND CON ★ <b>121.8 275.8</b> CLNC DEL <b>121.8 275.8</b>

• 272

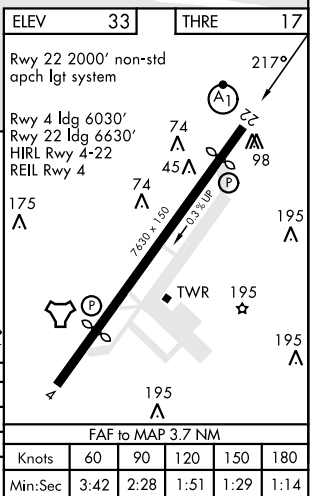
† Missed approach requires use of RNAV or ATC RADAR monitoring.  
Non-TACAN equipped aircraft expect ATC instructions.



EMERG SAFE ALT 100 NM 3100



CATEGORY	A	B	C	D
S-ILS 22	217/40		200	(200-¾)
S-LOC 22*	540/40	523 (600-¾)	540-1¼	523 (600-1¼)
<b>C</b> CIRCLING	580-1 547 (600-1)	660-1 627 (700-1)	680-1¾ 647 (700-1¾)	680-2 647 (700-2)



## ILS or LOC RWY 22