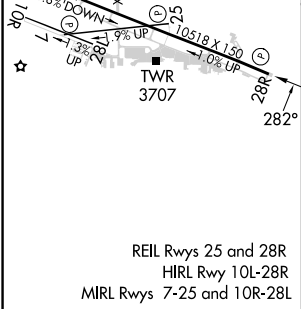
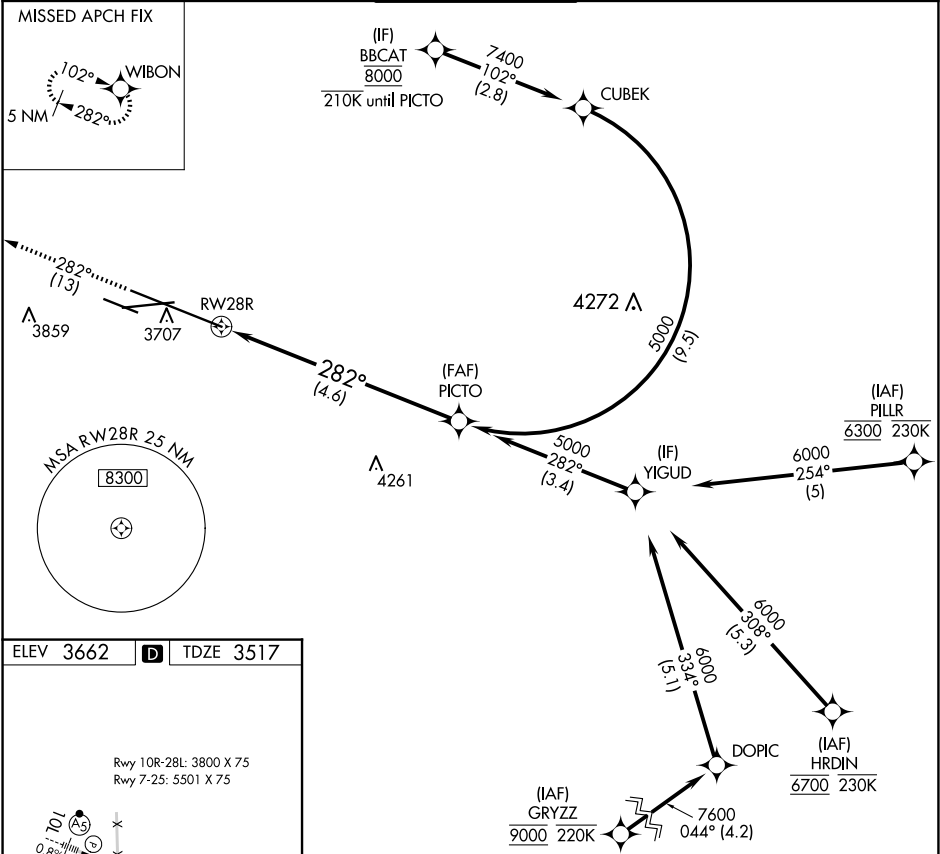



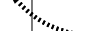


APP CRS	Rwy Idg	10518
282°	TDZE	3517
	Apt Elev	3662

RNAV (RNP) Z RWY 28R  
BILLINGS LOGAN INTL (BIL)

RNP AR APCH-GPS		MISSED APPROACH: Climb to 5900 on track 282° to WIBON and hold.		
ATIS	BILLINGS APP CON	BILLINGS TOWER	GND CON	CLNC DEL
126.3	120.5 284.6	127.2 257.8	121.9	121.9



See planview for multiple IF locations.				
5900 ↑ tr 282°	WIBON 	PICTO 5000		
RW28R 		5000 		GP 3.00° TCH 56
		282°		
4.6 NM				
CATEGORY	A	B	C	D
RNP 0.30 DA	3903-1¼ 386 (300-1¼)			
AUTHORIZATION REQUIRED				