

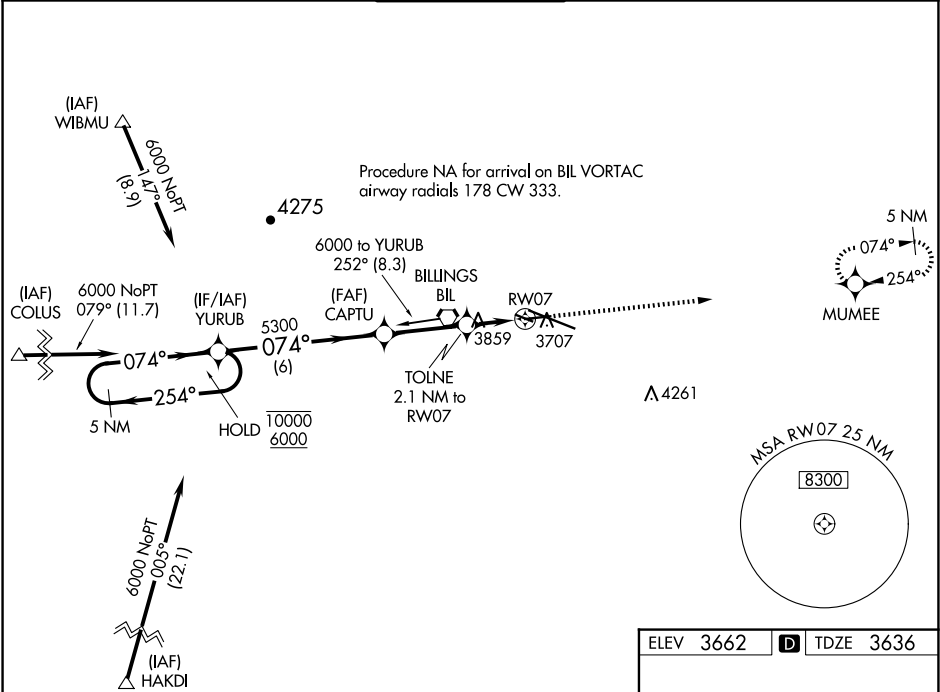
WAAS CH <b>87127</b> <b>W07A</b>	APP CRS <b>074°</b>	Rwy Idg TDZE Apt Elev	<b>5501</b> <b>3636</b> <b>3662</b>
--	------------------------	-----------------------------	---

RNAV (GPS) RWY 7

BILLINGS LOGAN INTL (BIL)

RNP APCH - GPS.	MISSED APPROACH: Climb to 6000 direct MUMEE and hold.
Rwy 7 helicopter visibility reduction below ¾ SM NA. For uncompensated Baro-VNAV systems, LNAV/VNAV NA below -25°C or above 53°C.	

ATIS <b>126.3</b>	BILLINGS APP CON <b>120.5 284.6</b>	BILLINGS TOWER <b>127.2 257.8</b>	GND CON <b>121.9</b>	CLNC DEL <b>121.9</b>
----------------------	--	--------------------------------------	-------------------------	--------------------------



5 NM Holding Pattern		VGSI and RNAV glidepath not coincident (VGSI Angle 3.00/TCH 31).		6000	MUMEE
10000 6000		YURUB	CAPTU	TOLNE	RW07
GP 3.00° TCH 45		5300	5300	4340	1.4 NM to RW07
6 NM		3 NM	0.7 NM	1.4 NM	
CATEGORY	A	B	C	D	
LPV DA	3886-¾		250 (300-¾)		
LNAV/VNAV DA	3950-7/8		314 (300-7/8)		
LNAV MDA	4120-1	484 (500-1)	4120-1¾	484 (500-1¾)	
CIRCLING	4160-1	498 (500-1)	4180-1½ 518 (600-1½)	4580-3 918 (1000-3)	

