

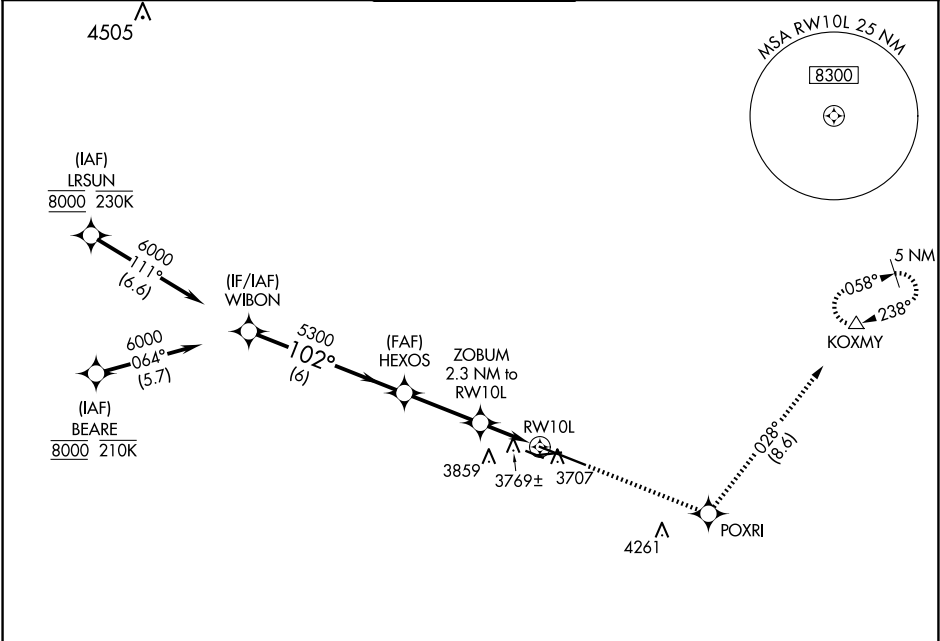
WAAS CH 50122 W10A	APP CRS 102°	Rwy Idg TDZE 3585 Apt Elev 3662
--	------------------------	---

RNAV (GPS) RWY 10L

BILLINGS LOGAN INTL (BIL)

RNP APCH - GPS.	MALSR	MISSED APPROACH: Climb to 6000 direct POXR1 and on track 028° to KOXMY and hold.
<div><div></div><div>For uncompensated Baro-VNAV systems, LNAV/VNAV NA below -24°C or above 50°C. #RVR 1800 authorized with use of FD or AP or HUD to DA.</div></div>	<div><div></div><div></div></div>	

ATIS 126.3	BILLINGS APP CON 120.5 284.6	BILLINGS TOWER 127.2 257.8	GND CON 121.9	CLNC DEL 121.9
----------------------	--	--------------------------------------	-------------------------	--------------------------



	WIBON	HEXOS	ZOBUM 2.3 NM to RW10L	1.3 NM to RW10L	RW10L
	6000	5300	4360		
	GP 3.00° TCH 51				
	6 NM	2.9 NM	1 NM	1.3 NM	
CATEGORY	A	B	C	D	
LPV DA#	3785/24 200 (200-½)				
LNAV/VNAV DA	4041/45 456 (400-¾)				
LNAV MDA	4020/24 435 (400-½)		4020/40 435 (400-¾)		
CIRCLING	4160-1 498 (500-1)		4180-1½ 518 (600-1½)		4580-3 918 (1000-3)

