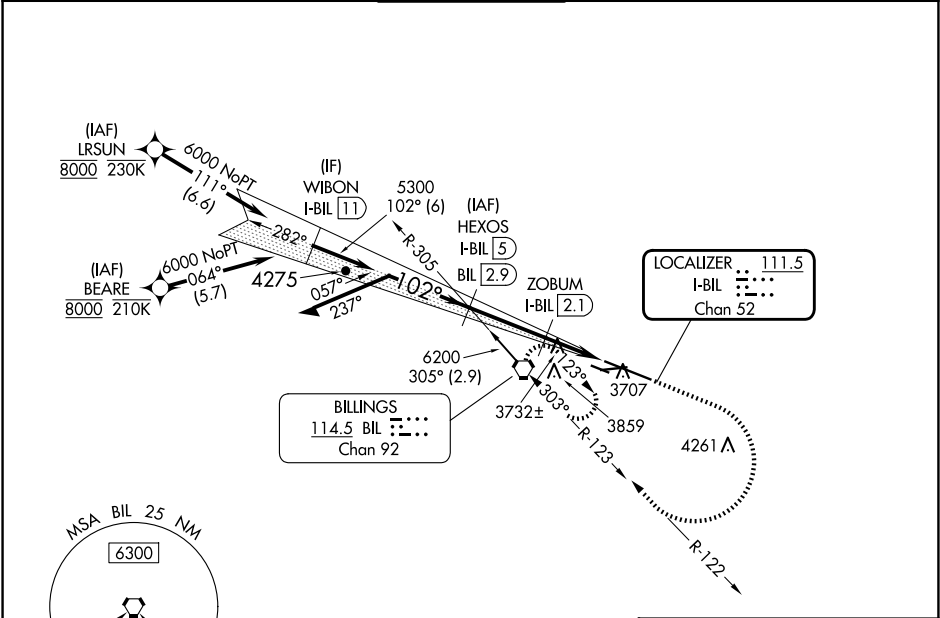


LOC/DME I-BIL <b>111.5</b> Chan <b>52</b>	APP CRS <b>102°</b>	Rwy Idg TDZE <b>3585</b> Apt Elev <b>3662</b>
---	------------------------	---

ILS Y or LOC Y RWY 10L  
BILLINGS LOGAN INTL (BIL)

DME required. RNP APCH-GPS. From BEARE or LRSUN.	MALSR 	MISSED APPROACH: Climb to 4500 then climbing right turn to 6000 on BIL VORTAC R-122 to BIL VORTAC and hold.
For inop ALS, increase S-LOC 10L Cat C/D visibility to RVR 6000. # RVR 1800 authorized with use of FD or AP or HUD to DA.		

ATIS <b>126.3</b>	BILLINGS APP CON <b>120.5 284.6</b>	BILLINGS TOWER <b>127.2 257.8</b>	GND CON <b>121.9</b>	CLNC DEL <b>121.9</b>
----------------------	--	--------------------------------------	-------------------------	--------------------------



ELEV 3662 TDZE 3585				
CATEGORY	A	B	C	D
S-ILS 10L #	3785/24 200 (200-½)			
S-LOC 10L	4000/24 415 (400-½)		4000/40 415 (400-¾)	
CIRCLING	4160-1 498 (500-1)		4180-1½ 518 (600-½) 4580-3 918 (1000-3)	

NW-1, 10 JUL 2025 to 07 AUG 2025

NW-1, 10 JUL 2025 to 07 AUG 2025