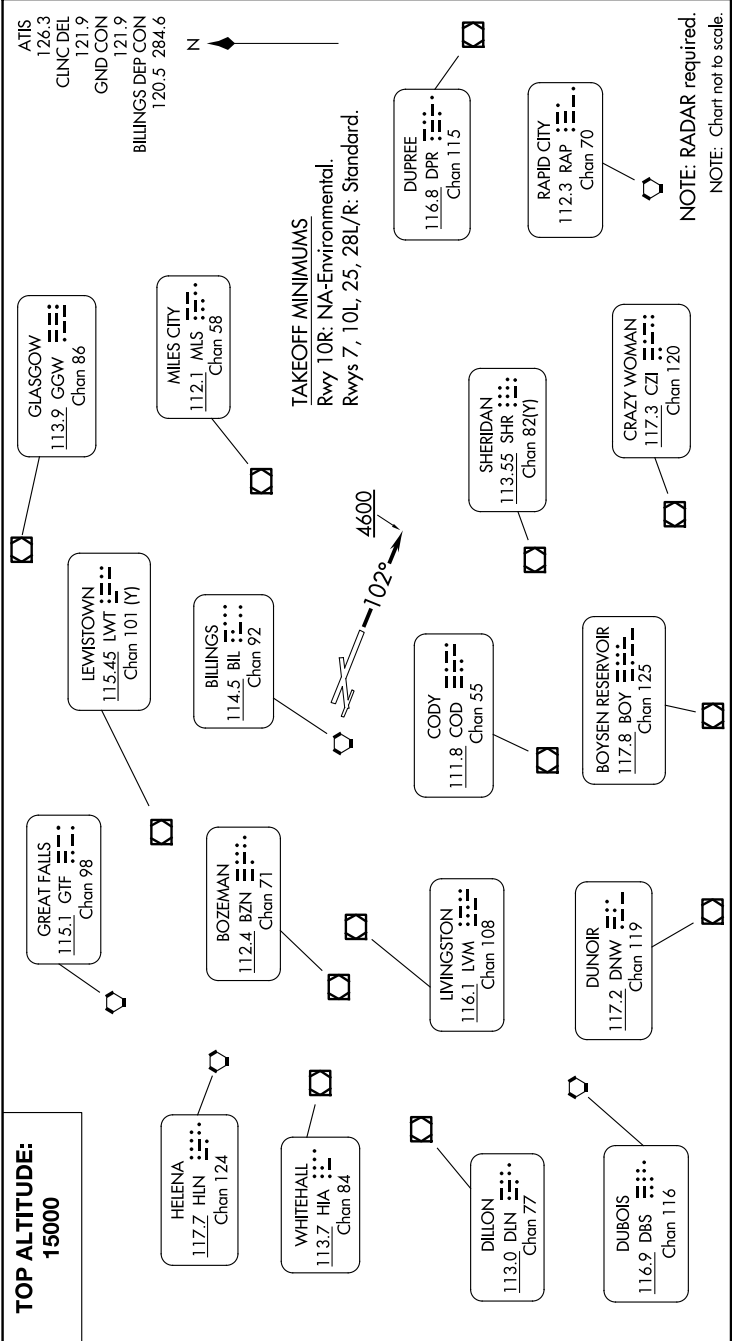


NW-1, 10 JUL 2025 to 07 AUG 2025

BILLINGS FIVE DEPARTURE

AL-48 (FAA)



DEPARTURE ROUTE DESCRIPTION

TAKEOFF RUNWAYS 7, 25, 28L/R: Climb on assigned heading for vectors to assigned fix/route, thence, . . . .  
TAKEOFF RUNWAY 10L: Climb heading 102° to 4600, then on assigned heading for vectors to assigned fix/route, thence, . . .  
. . . . maintain 15000 or assigned lower altitude. Expect clearance to filed altitude/flight level five minutes after departure.  
LOST COMMUNICATIONS: If no transmissions are received for 1 minute after departure, fly last assigned heading until reaching 7000.  
Proceed direct BIL VORTAC, then on last routing cleared and climb to filed altitude.

BILLINGS FIVE DEPARTURE

NW-1, 10 JUL 2025 to 07 AUG 2025