

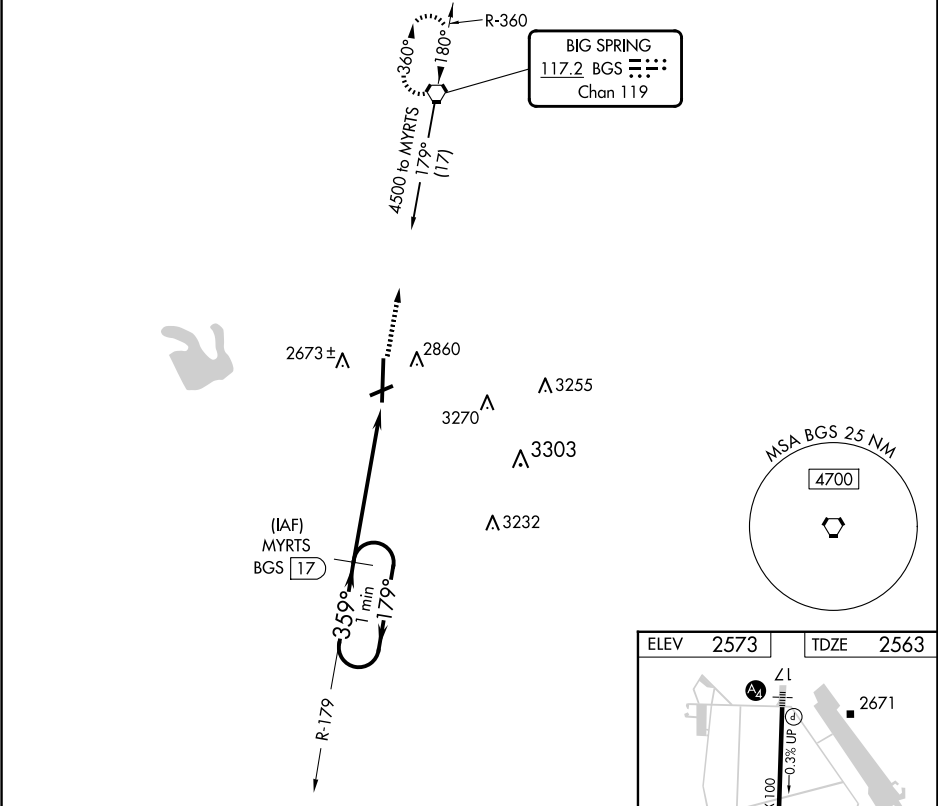
VORTAC BGS	APP CRS	Rwy Idg	8803
117.2	359°	TDZE	2563
Chan 119		Apt Elev	2573

VOR/DME RWY 35
BIG SPRING/MC MAHON-WRINKLE (BPG)

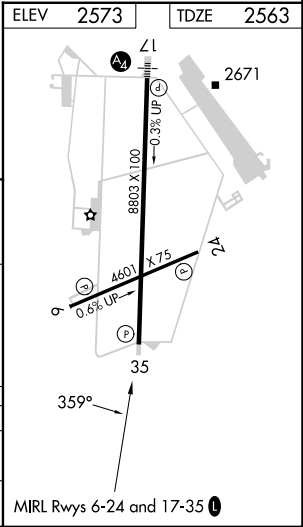
⚠ When VGSI inoperative, Circling Rwy 6 NA at night. Circling NA east of Rwy 17-35.
⚠ VDP NA when using Midland Intl Air and Space Port altimeter setting. When local altimeter setting not received, use Midland Intl Air and Space Port altimeter setting and increase all MDA 140 feet, increase S-35 Cats C and D and Circling Cats C and D visibility ¼ mile.

MISSED APPROACH: Climb to 4500 direct to BGS VORTAC and hold.

AWOS-3PT 118.025	FORT WORTH CENTER 133.7 350.2	UNICOM 122.8 (CTAF) 0
---------------------	----------------------------------	--------------------------



One Minute Holding Pattern				
MYRTS BGS 17				
4500 ← 179° → 359°				
359°				
3.05° TCH 36				
4.4 NM				
1.5				
CATEGORY	A	B	C	D
S-35	3080-1	517 (600-1)	3080-1½ 517 (600-1½)	3080-1¾ 517 (600-1¾)
CIRCLING	3080-1	507 (600-1)	3080-1½ 507 (600-1½)	3140-2 567 (600-2)



SC-2, 10 JUL 2025 to 07 AUG 2025

SC-2, 10 JUL 2025 to 07 AUG 2025