

WAAS CH 97618 W17A	APP CRS 175°	Rwy Idg 8803 TDZE 2562 Apt Elev 2573
--	------------------------	---

RNAV (GPS) RWY 17
BIG SPRING/MC MAHON-WRINKLE (BPG)

RNP APCH.

⚠ Inop table does not apply to LNAV/VNAV and LNAV Cat C. When local altimeter setting not received, use Midland Intl Air and Space Port altimeter setting: increase all DA 130 feet and all MDA 140 feet; increase LPV and LNAV/VNAV all Cats and LNAV Cat C and D visibility ½ SM. Baro-VNAV NA when using Midland Intl Air and Space Port altimeter setting. VDP NA with Midland Intl Air and Space Port altimeter setting. For uncompensated Baro-VNAV systems, LNAV/VNAV NA below -20°C or above 43°C.

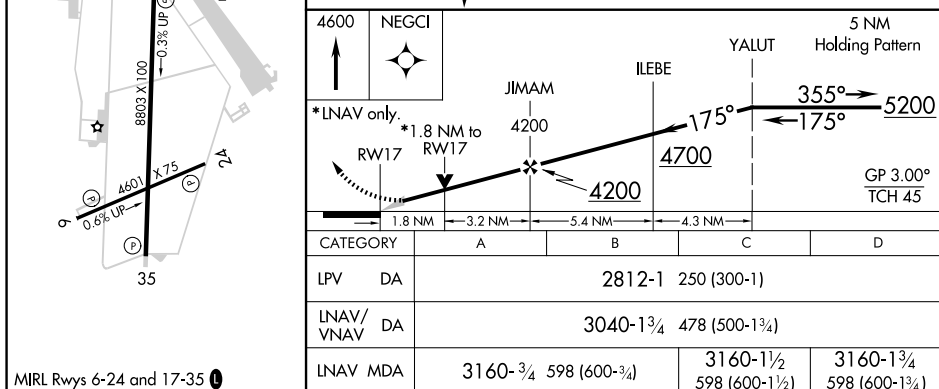
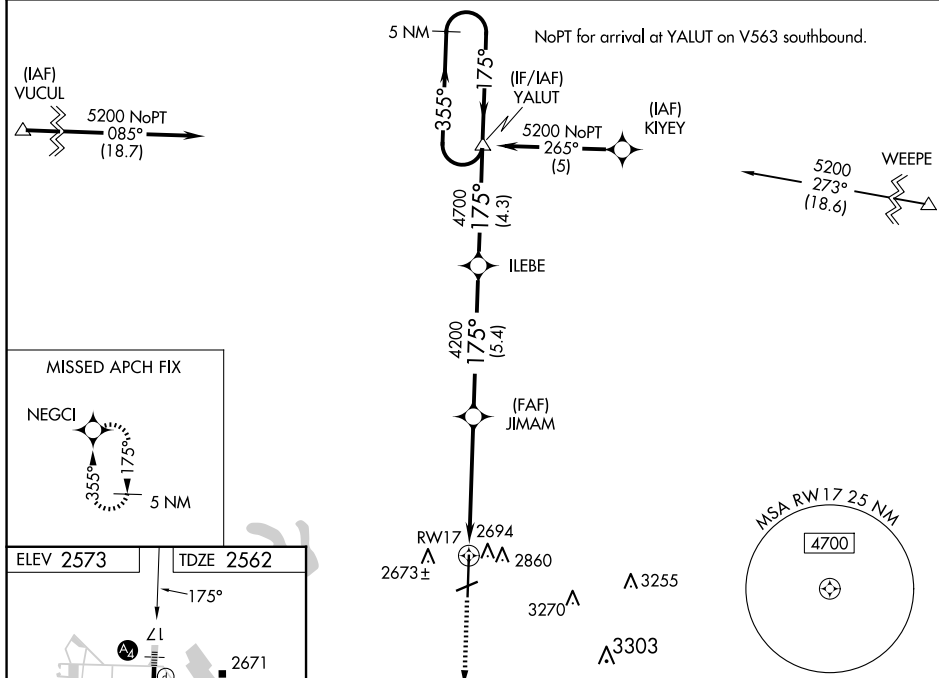
SSALS



MISSED APPROACH: Climb to 4600 direct NEGCI and hold.

AWOS-3PT
118.025

FORT WORTH CENTER
133.7 350.2

UNICOM
122.8 (CTAF) **L**

BIG SPRING, TEXAS
Amdt 1A 07NOV19

BIG SPRING/MC MAHON-WRINKLE (BPG)
32°13' N-101°31' W
RNAV (GPS) RWY 17