

TACAN SKE Chan <b>59</b> (112.2)	APP CRS <b>134°</b>	Rwy Idg TDZE <b>459</b> Apt Elev <b>459</b>
--	------------------------	---

TACAN RWY 14R

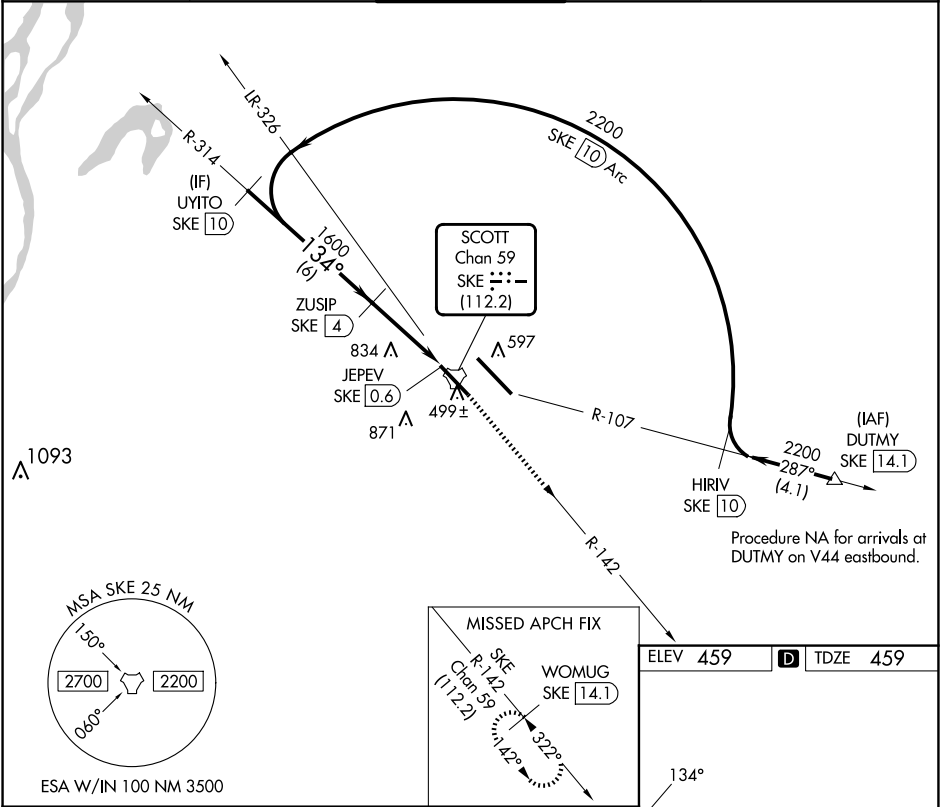
SCOTT AFB/MIDAMERICA ST LOUIS (BLV)

For inop ALS, increase S-14R Cat E visibility to 1½ SM.

ALSF-1

MISSED APPROACH: Climb to 2400 on SKE R-142 to WOMUG/14.1 DME and hold.

ATIS ★ <b>128.7 256.7</b>	ST LOUIS APP CON <b>125.2 281.5</b>	SCOTT TOWER <b>128.25 253.5</b>	GND CON <b>119.2 275.8</b>	CLNC DEL <b>119.875 263.025</b>
------------------------------	--	------------------------------------	-------------------------------	------------------------------------



<div>UYITO SKE 10</div> <div>2200</div>					<div>VGSI and descent angles not coincident (VGSI Angle 3.00/TCH 50).</div>					<div>2400</div> <div>SKE R-142</div> <div>WOMUG SKE 14.1</div>				
<div>134°</div>					<div>ZUSIP SKE 4</div> <div>1600</div> <div>3.00°</div> <div>TCH 65</div>					<div>SKE 2.5</div> <div>JEPEV SKE 0.6</div>				
<div>6 NM</div>					<div>1.5 NM</div>					<div>1.9 NM</div>				
CATEGORY	A		B		C		D		E					
S-14R	1100/24		641 (700-½)		1100-1⅓		641 (700-1⅓)							
CIRCLING	1100-1 641 (700-1)		1120-1 661 (700-1)		1240-2¼ 781 (800-2¼)		1240-2½ 781 (800-2½)		1240-2¾ 781 (800-2¾)		REIL Rwy 14L HIRL Rwy 14L-32R and 14R-32L			