
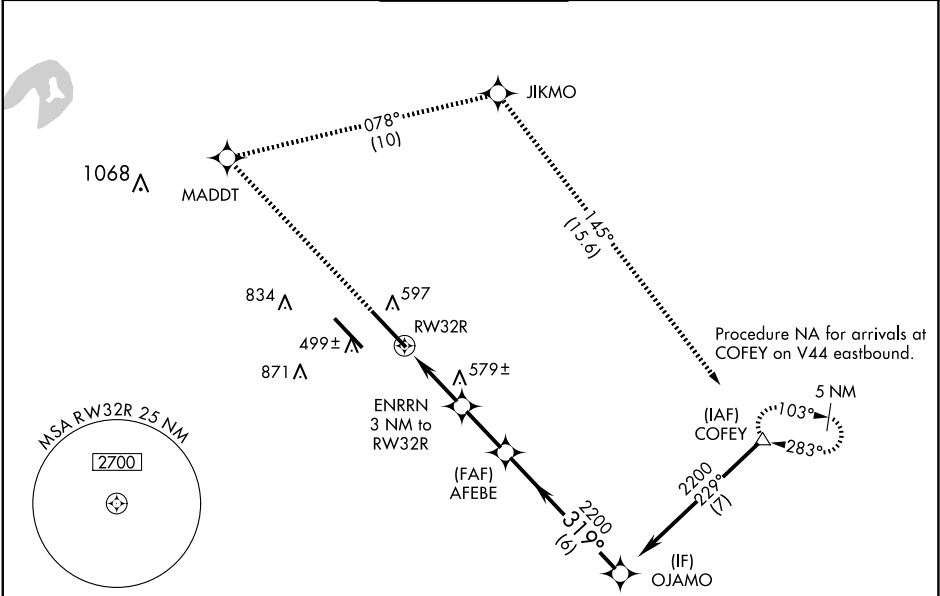


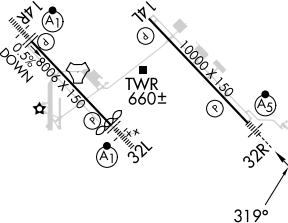





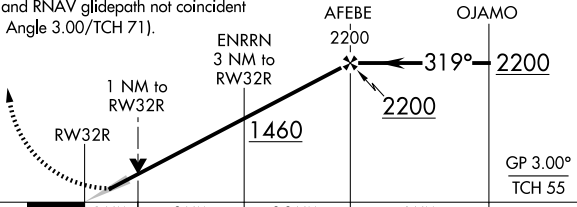

WAAS CH <b>50518</b> <b>W32A</b>	APP CRS <b>319°</b>	Rwy Idg <b>10000</b> TDZE <b>442</b> Apt Elev <b>459</b>
--	------------------------	--

RNAV (GPS) RWY 32R

SCOTT AFB/MIDAMERICA ST LOUIS (BLV)

RNP APCH - GPS.			MALSR 	MISSED APPROACH: Climb to 2300 direct MADDT and right turn on track 078° to JIKMO and on track 145° to COFEY and hold.	
<div>▼</div> <div>▲</div> For uncompensated Baro-VNAV systems, procedure NA below -18°C or above 54°C. For inop ALS, increase LNAV/VNAV all Cats visibility to RVR 5500. ASR					
ATIS ★ 128.7 256.7	ST LOUIS APP CON 125.2 281.5	SCOTT TOWER 128.25 253.5	GND CON 119.2 275.8	CLNC DEL 119.875 263.025	



ELEV 459	D	TDZE 442								
			2300	MADDT	JIKMO	COFEY				
					 tr 078°		tr 145°			
			VGSI and RNAV glidepath not coincident (VGSI Angle 3.00/TCH 71).							
										
			CATEGORY	A	B	C	D			
			LPV DA	642/24 200 (200-½)						
			LNAV/VNAV DA	804/35 362 (400-⅝)						
			LNAV MDA	840/24 398 (400-½)		840/35 398 (400-⅝)				
			 CIRCLING	1000-1 541 (600-1)	1120-1 661 (700-1)	1240-2¼ 781 (800-2¼)	1240-2½ 781 (800-2½)			

EC-3, 10 JUL 2025 to 07 AUG 2025

EC-3, 10 JUL 2025 to 07 AUG 2025