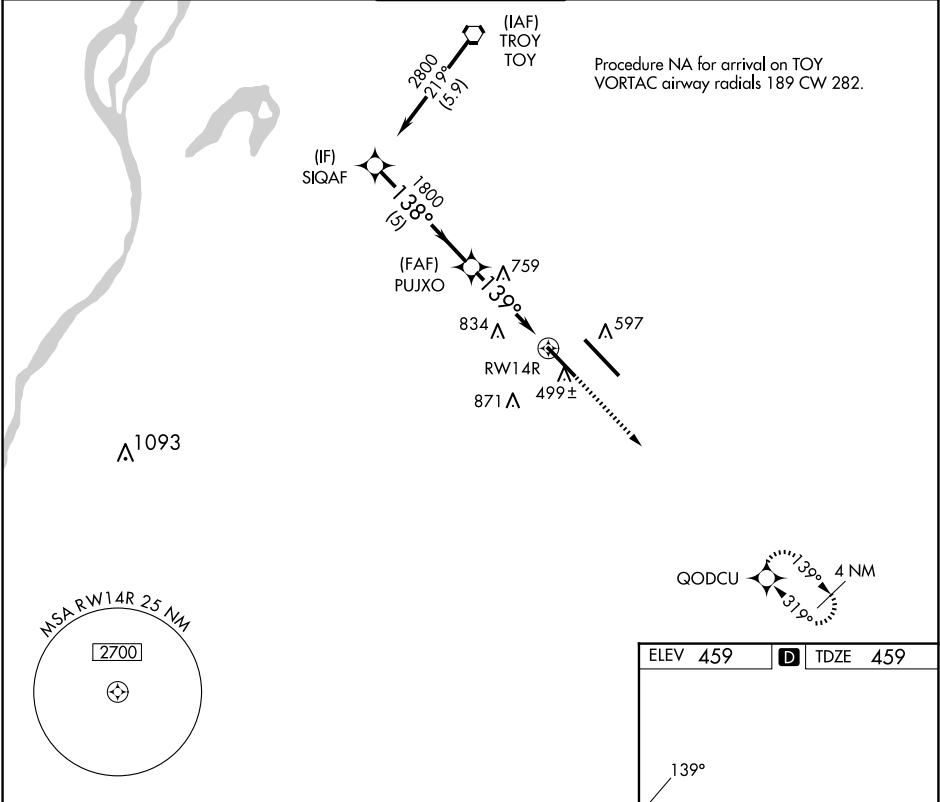


|         |          |      |
|---------|----------|------|
| APP CRS | Rwy Idg  | 8006 |
| 139°    | TDZE     | 459  |
|         | Apt Elev | 459  |

RNAV (GPS) RWY 14R

SCOTT AFB/MIDAMERICA ST LOUIS (BLV)

|   |                  |              |   |                 |
|---|------------------|--------------|---|-----------------|
| RNP APCH - GPS.   |                  | ALSIF-1      | MISSED APPROACH: Climb to 3000 direct QODCU and hold. |                 |
| For inop ALS, increase LNAV Cat C/D visibility to 1 ¼ SM. |                  | (A1)         |   |                 |
| ATIS ★  | ST LOUIS APP CON | SCOTT TOWER  | GND CON   | CLNC DEL        |
| 128.7 256.7   | 125.2 281.5      | 128.25 253.5 | 119.2 275.8   | 119.875 263.025 |



|          |                       |  |                         |                         |  |
|----------|-----------------------|--|-------------------------|-------------------------|--|
| SIQAF    |                       | VGS and descent angles not coincident (VGS Angle 3.00/TCH 50). |                         | 3000                    | QODCU  |
| 2800     |                       | 138°   |                         |                         |  |
|          |                       | 1800   |                         |                         |  |
|          |                       | 139°   |                         |                         |  |
|          |                       | 3.01° TCH 65   |                         |                         |  |
|          |                       | 1.7 NM to RWY 14R  |                         |                         |  |
|          |                       | RWY 14R  |                         |                         |  |
| 5 NM     |                       | 2.3 NM   |                         | 1.7 NM                  |  |
| CATEGORY | A                     | B  | C                       | D                       |  |
| LNAV MDA | 1060-24               | 601 (700-½)  | 1060-13⁄8               | 601 (700-13⁄8)          |  |
| CIRCLING | 1060-1<br>601 (700-1) | 1120-1<br>661 (700-1)  | 1240-2¼<br>781 (800-2¼) | 1240-2½<br>781 (800-2½) | REIL Rwy 14L<br>HIRL Rwy 14L-32R and 14R-32L |

EC-3, 10 JUL 2025 to 07 AUG 2025

EC-3, 10 JUL 2025 to 07 AUG 2025