

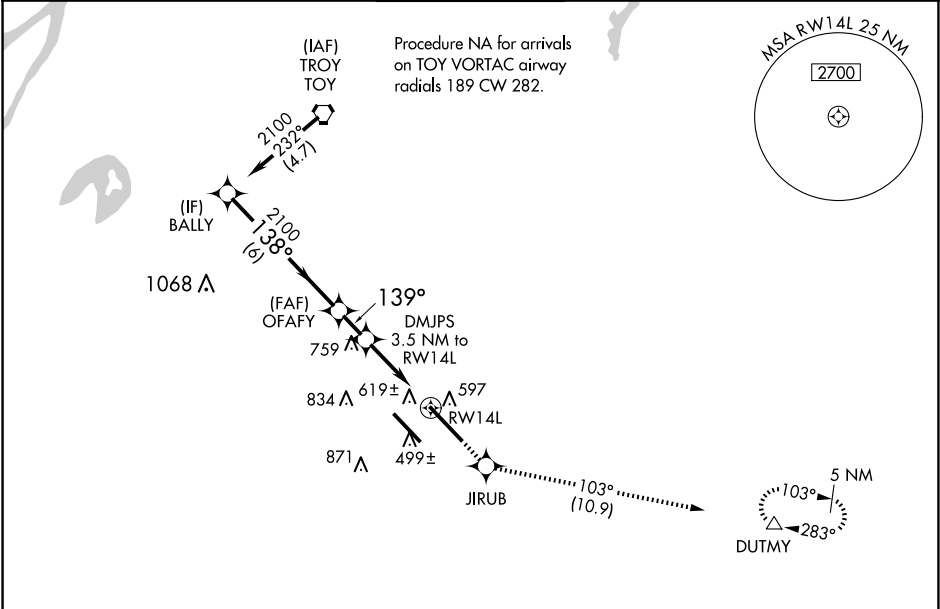
WAAS CH 58218 W14A	APP CRS 139°	Rwy Idg 10000 TDZE 442 Apt Elev 459
--	------------------------	--

RNAV (GPS) RWY 14L

SCOTT AFB/MIDAMERICA ST LOUIS (BLV)

RNAV 1 - GPS.	MISSED APPROACH: Climb to 2300 direct JIRUB and on track 103° to DUTMY and hold.
<div><div><div>▼</div><div>▲</div><div>ASR</div></div><div>Rwy 14L helicopter visibility reduction below RVR 4000 NA. For uncompensated Baro-VNAV systems, LNAV/VNAV NA below -18°C or above 54°C.</div></div>	

ATIS ★ 128.7 256.7	ST LOUIS APP CON 125.2 281.5	SCOTT TOWER 128.25 253.5	GND CON 119.2 275.8	CLNC DEL 119.875 263.025
------------------------------	--	------------------------------------	-------------------------------	------------------------------------



VGSI and RNAV glidepath not coincident (VGSI Angle 3.00/TCH 71).				2300	JIRUB	DUTMY	ELEV 459	TDZE 442
				↑	✧	tr 103°	△	
<div><div>BALLY</div><div>OFAFY</div><div>DMJPS 3.5 NM to RWY 14L</div><div>GP 3.00° TCH 55</div><div>2100</div><div>2100</div><div>138°</div><div>139°</div><div>1620</div><div>1.2 NM to RWY 14L</div><div>RWY 14L</div><div>6 NM</div><div>1.5 NM</div><div>2.3 NM</div><div>1.2 NM</div></div>				<div><div>139°</div><div>1000 X 1.50</div><div>32R</div><div>32L</div><div>660±</div><div>52L</div><div>52R</div><div>14R</div><div>14L</div><div>DOWN</div></div>				
CATEGORY	A	B	C	D				
LPV DA	694/40 252 (300-¾)							
LNAV/VNAV DA	934-1⅓ 492 (500-1⅓)							
LNAV MDA	900/55	458 (500-1)	900-1⅓	458 (500-1⅓)				
CIRCLING	1000-1 541 (600-1)	1120-1 661 (700-1)	1240-2¼ 781 (800-2¼)	1240-2½ 781 (800-2½)	REIL Rwy 14L HIRL Rws 14R-32L and 14L-32R			

EC-3, 10 JUL 2025 to 07 AUG 2025

EC-3, 10 JUL 2025 to 07 AUG 2025