

EC-3, 10 JUL 2025 to 07 AUG 2025

ATIS ★  
128.7 256.7  
CLNC DEL  
119.875 263.025  
GND CON  
119.2 275.8  
SCOTT TOWER  
128.25 253.5  
ST LOUIS DEP CON  
125.2 281.5

ST. LOUIS  
117.4 STL  
Chan 121

TOP ALTITUDE:  
ASSIGNED BY ATC



TAKEOFF MINIMUMS  
Rwys 14L/R, 32R: Standard.  
Rwy 32L: 300-1½ or standard with minimum climb of  
250' per NM to 800.

NOTE: DME and RADAR required.

DEPARTURE ROUTE DESCRIPTION

Climb on assigned heading for vector to appropriate route. Maintain 3000 or assigned altitude, thence. . . .

. . . . from over STL VORTAC on STL R-130 to PLESS, then on (transition) or (assigned route). Expect filed altitude 10 minutes after departure.

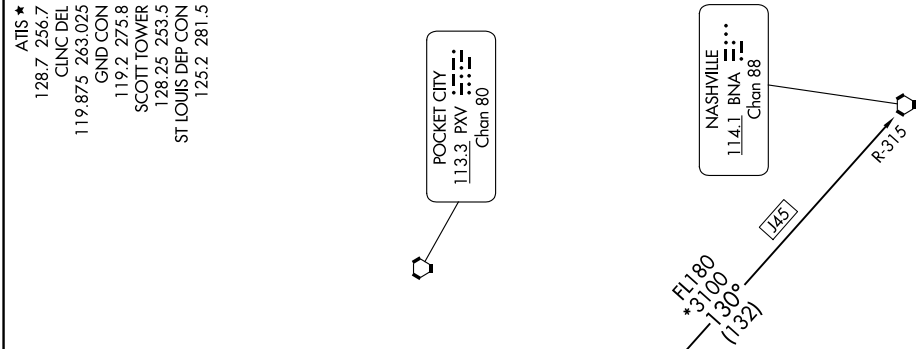
DENNI TRANSITION (PLESS5:DENNI): From over PLESS on STL R-130 to DENNI.

NASHVILLE TRANSITION (PLESS5:BNA): From over PLESS on STL R-130 to DENNI, then on STL R-130 and BNA R-315 to BNA VORTAC.

NOTE: Chart not to scale.

(PLESS5.PLESS) 23334  
PLESS FIVE DEPARTURE

AL-46 (FAA)  
SCOTT AFB/MIDAMERICA ST LOUIS (BLV)  
BELLEVILLE, ILLINOIS



PLESS FIVE DEPARTURE  
(PLESS5.PLESS) 17AUG17

SCOTT AFB/MIDAMERICA ST LOUIS (BLV)  
BELLEVILLE, ILLINOIS

EC-3, 10 JUL 2025 to 07 AUG 2025