

LOC I-JDU 111.15	APP CRS 319°	Rwy Ldg 10000 TDZE 442 Apt Elev 459
----------------------------	------------------------	--

ILS or LOC RWY 32R

SCOTT AFB/MIDAMERICA ST LOUIS (BLV)

⚠

ASR

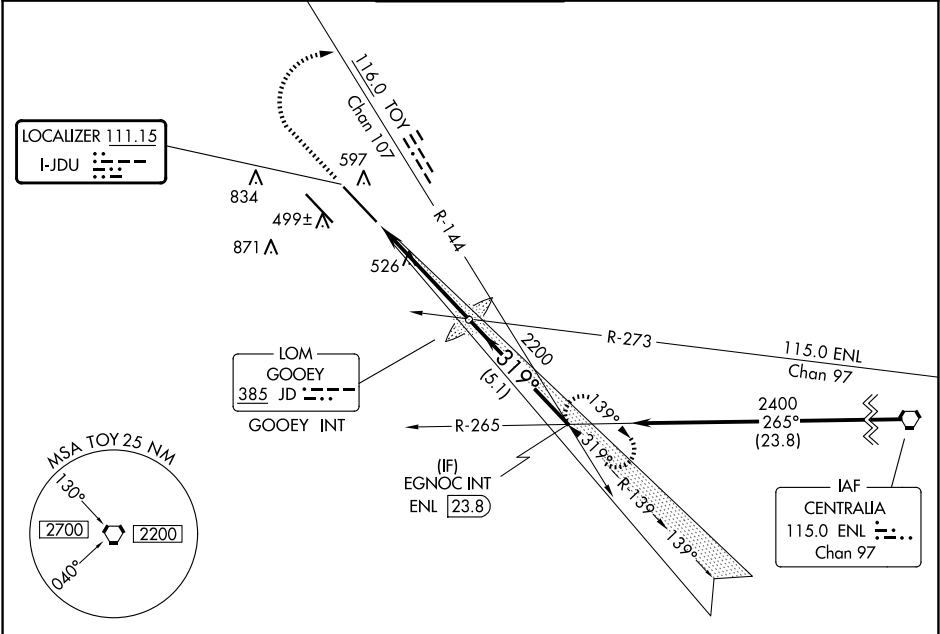
For inop ALS, increase S-ILS 32R Cat E visibility to RVR 4000 and increase S-LOC Cat E visibility to RVR 5000.
* RVR 1800 authorized with use of FD or AP or HUD to DA.

MALSR

AS

MISSED APPROACH: Climb to 1500 then climbing right turn to 2400 on heading 194° and TOY VORTAC R-144 to EGNOC INT and hold.

ATIS ★ 128.7 256.7	ST LOUIS APP CON 125.2 281.5	SCOTT TOWER 128.25 253.5	GND CON 119.2 275.8	CLNC DEL 119.875 263.025
------------------------------	--	------------------------------------	-------------------------------	------------------------------------



ELEV 459

D

TDZE 442

14L

14R

32L

32R

1000x150

600x150

300x150

0x150

14L

14R

32L

32R

1000x150

600x150

300x150

0x150

14L

14R

32L

32R

1000x150

600x150

300x150

0x150

REIL Rwy 14L

HIRL Rwys 14R-32L and 14L-32R

FAF to MAP 4.9 NM

Knots

60

90

120

150

180

Min:Sec

4:54

3:16

2:27

1:58

1:38

Procedure NA for arrivals on ENL VORTAC airway radials 225 CW 294.					
1500	2400	TOY R-144	EGNOC INT	VGSI and ILS glidepath not coincident (VGSI Angle 3.00/TCH 71).	
hdg 194°		GOOEY LOM/INT		EGNOC INT	
2043		2200		2400	
4.9 NM		5.1 NM		GS 3.00° TCH 55	
CATEGORY	A	B	C	D	E
S-ILS 32R *	642/24 200 (200-½)				
S-LOC 32R	780/24 338 (400-½)		780/26 338 (400-½)		
CIRCLING	1000-1	1120-1	1240-2¼	1240-2½	1240-2¾
	541 (600-1)	661 (700-1)	781 (800-2¼)	781 (800-2½)	781 (800-2¾)