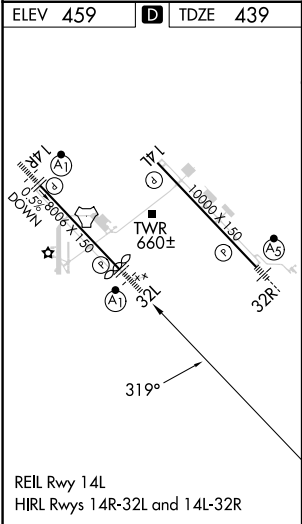
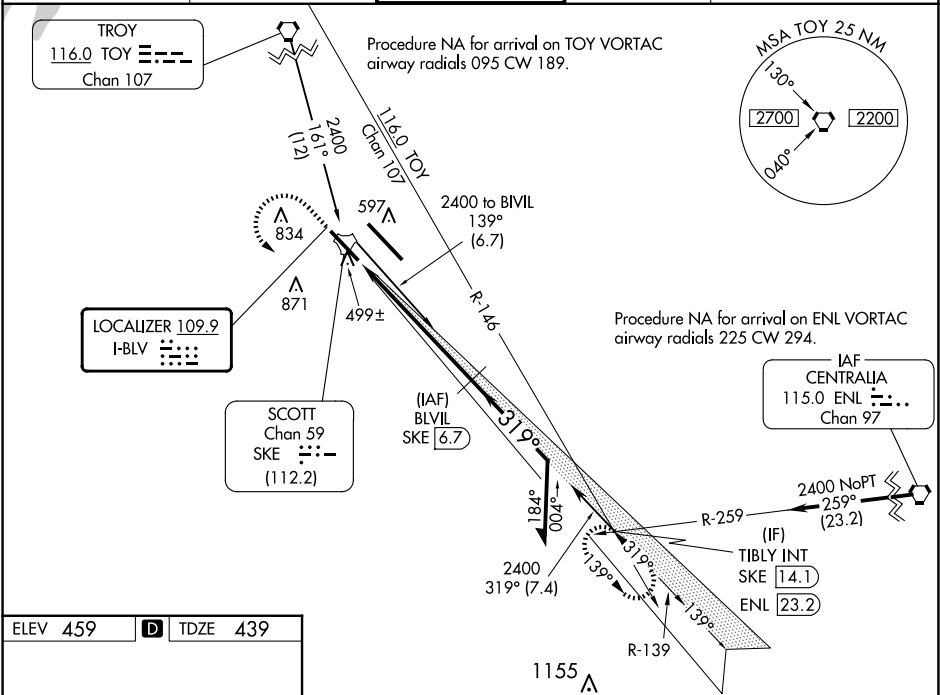


LOC I-BLV 109.9	APP CRS 319°	Rwy ldg TDZE Apt Elev
		7822 439 459

ILS or LOC RWY 32L
SCOTT AFB/MIDAMERICA ST LOUIS (BLV)

DME required.	ALSIF-1 	MISSED APPROACH: Climb to 1500 then climbing left turn to 2400 direct SKE TACAN and on SKE R-139 to TIBLY INT/ SKE 14.1 DME and hold.
 ASR For inop ALS, increase S-ILS 32L Cat E visibility to RVR 4000 and increase S-LOC 32L Cat C/D/E visibility to 1 1/2 SM. Procedure turn NA for Cat E aircraft. DME from SKE TACAN. Simultaneous reception of I-BLV and SKE DME required. *RVR 1800 authorized with use of FD or AP or HUD to DA.		

ATIS ★ 128.7 256.7	ST LOUIS APP CON 125.2 281.5	SCOTT TOWER 128.25 253.5	GND CON 119.2 275.8	CLNC DEL 119.875 263.025
------------------------------	--	------------------------------------	-------------------------------	------------------------------------



1500	2400	SKE	SKE R-139	TIBLY INT	BLVIL SKE 6.7	VGSI and ILS glidepath not coincident (VGSI Angle 3.00/TCH 50). Remain within 10 NM
		SKE 0.7	SKE 2			
		1.4 NM	4.6 NM			
CATEGORY	A	B	C	D	E	
S-ILS 32L *	639/24 200 (200-1/2)					
S-LOC 32L	920/24	481 (500-1/2)	920/50	481 (500-1)		
CIRCLING	1000-1 541 (600-1)	1120-1 661 (700-1)	1240-2 1/4 781 (800-2 1/4)	1240-2 1/2 781 (800-2 1/2)	1240-2 3/4 781 (800-2 3/4)	

EC-3, 10 JUL 2025 to 07 AUG 2025

EC-3, 10 JUL 2025 to 07 AUG 2025