

LOC I- O-XK 109.9	APP CRS 139°	Rwy Idg 8006 TDZE 459 Apt Elev 459
------------------------------------	------------------------	---

ILS or LOC RWY 14R
SCOTT AFB/MIDAMERICA ST LOUIS (BLV)

⚠ For inop ALS, increase S-ILS 14R Cat E visibility to RVR 4000 and S-LOC 14R Cat E visibility to 1¾ mile. DME from SKE TACAN. DME use requires simultaneous reception of I-OXK and SKE DME.

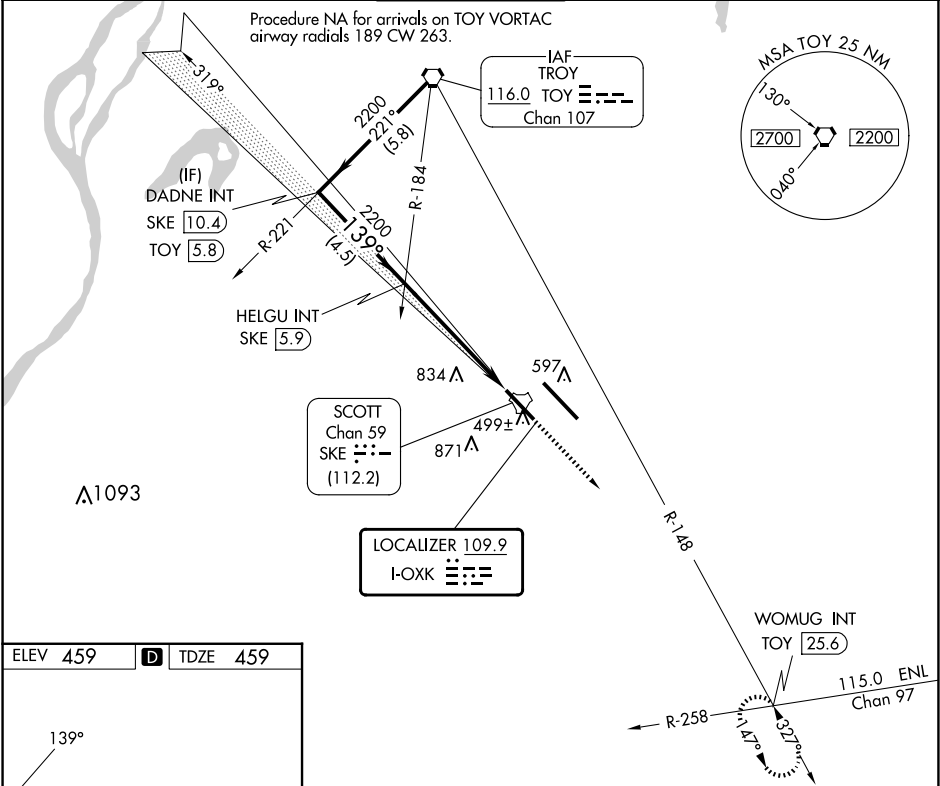
⚠ **ASR** * RVR 1800 authorized with use of FD or AP or HUD to DA.

ALSF-1

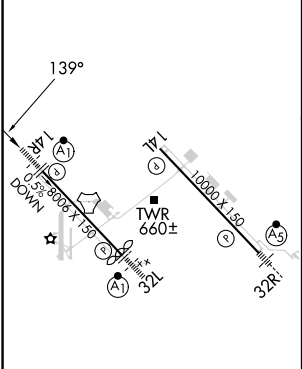
(A1)

MISSED APPROACH: Climb to 2200 then on TOY VORTAC R-148 to WOMUG INT/TOY 25.6 DME and hold.

ATIS ★ 128.7 256.7	ST LOUIS APP CON 125.2 281.5	SCOTT TOWER 128.25 253.5	GND CON 119.2 275.8	CLNC DEL 119.875 263.025
------------------------------	--	------------------------------------	-------------------------------	------------------------------------



ELEV 459	D	TDZE 459
----------	----------	----------



HIRL Rwy 14L-32R and 14R-32L
REIL Rwy 14L

FAF to MAP 5.3 NM					
Knots	60	90	120	150	180
Min:Sec	5:18	3:32	2:39	2:07	1:46

<div>DADNE INT SKE 10.4</div>		<div>HELGU INT SKE 5.9</div>		<div>2200 ↑</div>	<div>TOY R-148</div>	<div>WOMUG INT</div>
<div>2200</div>		<div>2200</div>		<div>2200</div>		
<div>GS 3.00° TCH 51</div>		<div>4.5 NM</div>		<div>5.3 NM</div>		
<div>A</div>		<div>B</div>	<div>C</div>	<div>D</div>	<div>E</div>	
<div>CATEGORY</div>	<div>S-ILS 14R *</div>					
	<div>659/24 200 (200-½)</div>					
<div>S-LOC 14R</div>	<div>1040/24 581 (600-½)</div>		<div>1040-1¼ 581 (600-1¼)</div>			
<div>CIRCLING</div>	<div>1040-1 581 (600-1)</div>	<div>1120-1 661 (700-1)</div>	<div>1240-2¼ 781 (800-2¼)</div>	<div>1240-2½ 781 (800-2½)</div>	<div>1240-2¾ 781 (800-2¾)</div>	

EC-3, 10 JUL 2025 to 07 AUG 2025

EC-3, 10 JUL 2025 to 07 AUG 2025