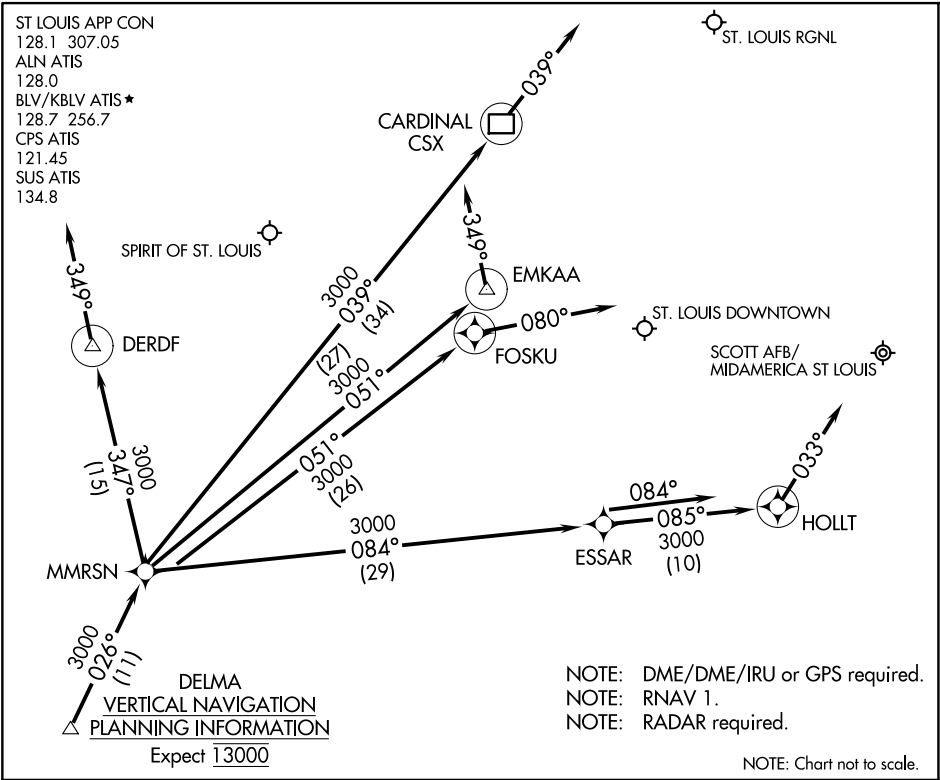


DELMA FOUR ARRIVAL (RNAV)

AL-46 (FAA)

BELLEVILLE, ILLINOIS



ARRIVAL ROUTE DESCRIPTION

SPRIT OF ST. LOUIS:
LANDING RUNWAYS 8L/R: From DELMA on track 026° to MMRSN, then on track 347° to DERDF. Expect RADAR vectors to final approach. If no heading received, track 349°.
LANDING RUNWAYS 26L/R: From DELMA on track 026° to MMRSN, then on track 051° to EMKAA. Expect RADAR vectors to final approach. If no heading received, track 349°.

ST. LOUIS DOWNTOWN:
LANDING RUNWAY 12R: From DELMA on track 026° to MMRSN, then on track 051° to FOSKU. Expect RADAR vectors to final approach. If no heading received, track 080°.
LANDING RUNWAYS 30L/R: From DELMA on track 026° to MMRSN, then on track 084° to ESSAR, then on track 085° to HOLLT. Expect RADAR vectors to final approach. If no heading received, track 033°.

SCOTT AFB/MIDAMERICA ST LOUIS:
LANDING RUNWAYS 14L/R, 32L/R: From DELMA on track 026° to MMRSN, then on track 084° to ESSAR. Expect RADAR vectors to final approach. If no heading received, track 084°.

ST. LOUIS RGNL:
LANDING RUNWAYS 11, 17, 29, 35: From DELMA on track 026° to MMRSN, then on track 039° to CSX DME. Expect RADAR vectors to final approach course. If no heading received, track 039°.

DELMA FOUR ARRIVAL (RNAV)

BELLEVILLE, ILLINOIS

EC-3, 10 JUL 2025 to 07 AUG 2025

EC-3, 10 JUL 2025 to 07 AUG 2025