

BELLINGHAM, WASHINGTON

AL-45 (FAA)

25163

APP CRS	Rwy Ldg	6700
344°	TDZE	171
	Apt Elev	171

RNAV (RNP) Z RWY 34
BELLINGHAM INTL (BLI)

RNP AR APCH-GPS.

T For uncompensated Baro-VNAV systems, procedure NA below
A -7°C or above 54°C.

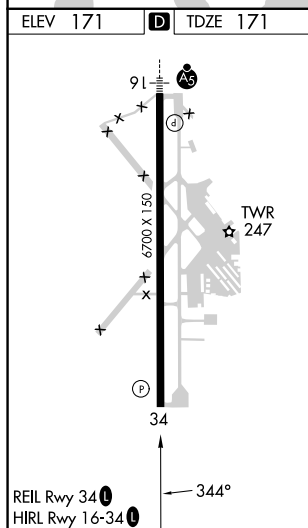
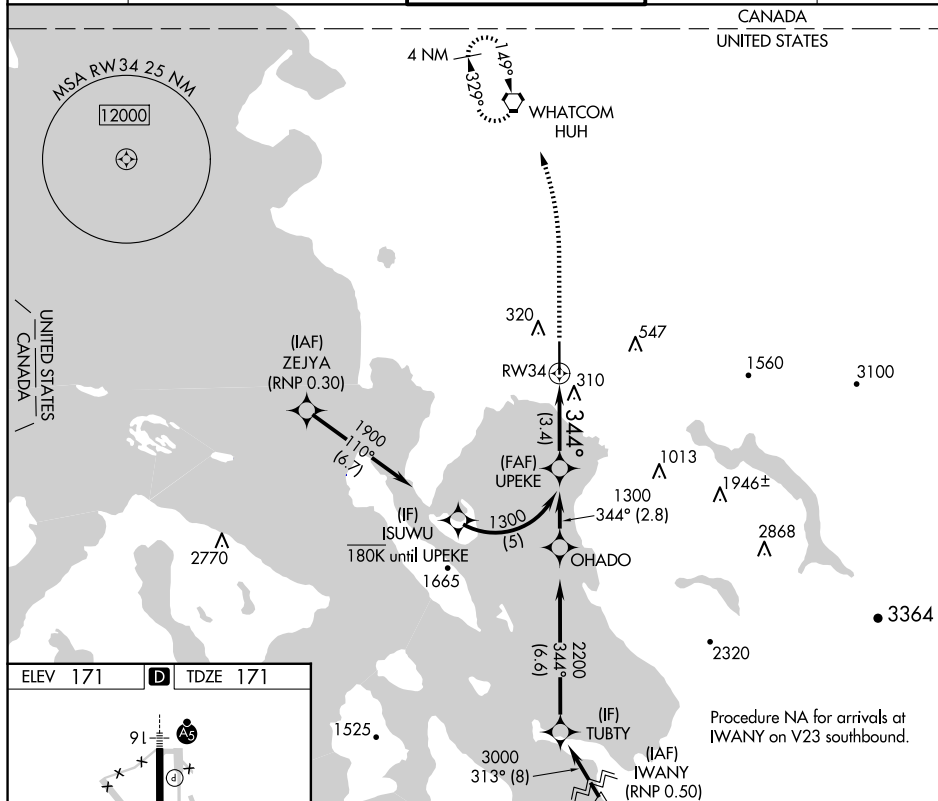
MISSED APPROACH: Climb to 700 then climbing left turn to 3000 direct WHATCOM VORTAC and hold, continue climb-in-hold to 3000.

ATIS
134.45

VICTORIA TERMINAL APP CON
132-7

BELLINGHAM TOWER ★
124.9 (CTAF) 379.3

GND CON
127.4 379.3

UNICOM
122.95

700 3000 HUH

See planview for multiple IF locations.

UPEKE 1300

344° 3.4 NM

GP 3.00° TCH 50

CATEGORY	A	B	C	D
RNP 0.11 DA	463- $\frac{7}{8}$	292 (300- $\frac{7}{8}$)		
RNP 0.30 DA	578-1 $\frac{3}{8}$	407 (500-1 $\frac{3}{8}$)		

AUTHORIZATION REQUIRED

BELLINGHAM, WASHINGTON
Amdt 1B 19MAY22

48°48'N-122°32'W

BELLINGHAM INTL (BLI)
RNAV (RNP) Z RWY 34

NW-1, 10 JUL 2025 to 07 AUG 2025

NW-1, 10 JUL 2025 to 07 AUG 2025