

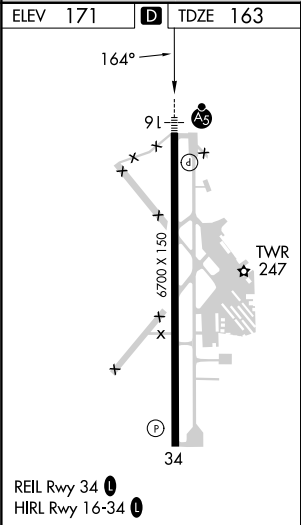
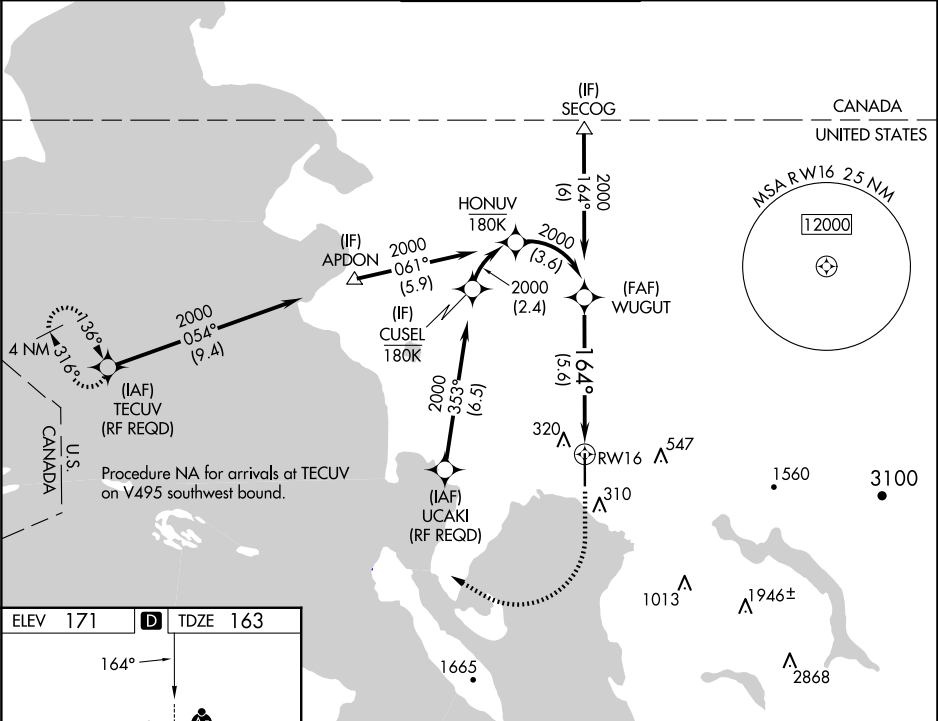
APP CRS	Rwy Ldg	6700
164°	TDZE	163
	Apt Elev	171




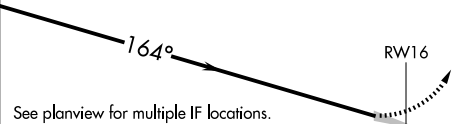
RNAV (RNP) Z RWY 16

BELLINGHAM INTL (BLI)

RNP AR APCH	MALSR	MISSED APPROACH: Climb to 700 then climbing right turn to 2000 direct TECUV and hold.
For uncompensated Baro-VNAV systems, procedure NA below -10°C or above 54°C. For inop ALS, increase RNP 0.27 all Cats visibility to RVR 4500, increase RNP 0.30 all Cats visibility to RVR 6000.		

ATIS 134.45	VICTORIA TERMINAL APP CON 132.7	BELLINGHAM TOWER★ 124.9 (CTAF) 0 379.3	GND CON 127.4 379.3	UNICOM 122.95
----------------	------------------------------------	---	------------------------	------------------



WUGUT		700	2000	TECUV
2000				
<u>2000</u>				
GP 3.00° TCH 51				
See planview for multiple IF locations.		5.6 NM		
CATEGORY	A	B	C	D
RNP 0.27 DA	483/24 320 (400~½)			
RNP 0.30 DA	580/45 417 (500~¾)			
AUTHORIZATION REQUIRED				