

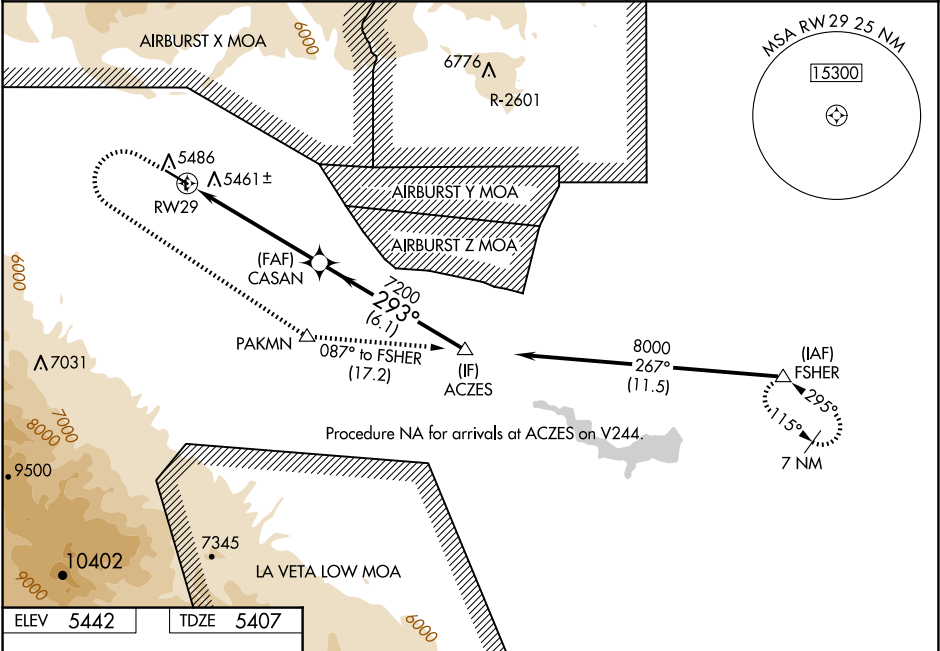
WAAS CH <b>69530</b> <b>W29A</b>	APP CRS <b>293°</b>	Rwy Ldg TDZE Apt Elev	<b>5399</b> <b>5407</b> <b>5442</b>
--	------------------------	-----------------------------	---

RNAV (GPS) RWY 29

FREMONT COUNTY (1V6)

RNP APCH. ▼ For uncompensated Baro-VNAV systems, LNAV/VNAV NA below -25°C or above 54°C. Circling NA north of Rwy 11-29. Circling NA to Rwy 35.	MISSED APPROACH: (Do not exceed 210K until PAKMN) Climb to 5900 then climbing left turn to 8000 direct PAKMN and track 087° to FSHER and hold.
--	--

AWOS-3 <b>120.025</b>	DENVER APP CON ★ <b>120.1 290.5</b>	UNICOM <b>122.8 (CTAF) 0</b>
--------------------------	--	---------------------------------



ELEV <b>5442</b>	TDZE <b>5407</b>
------------------	------------------

