

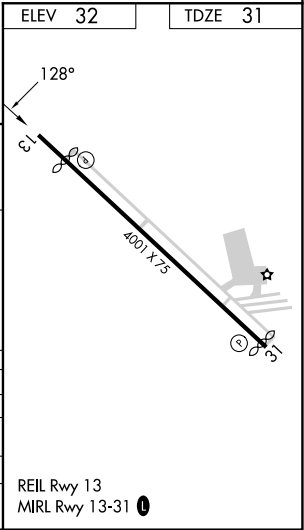
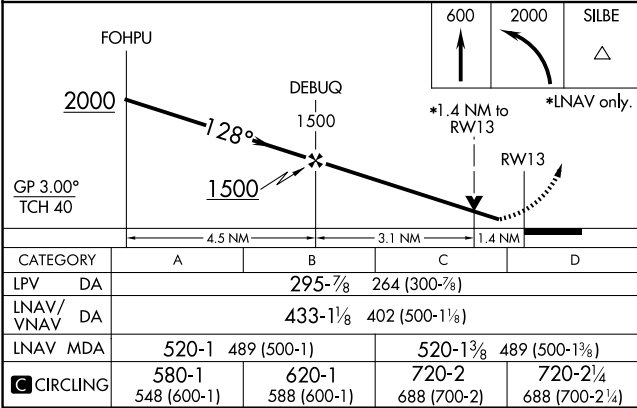
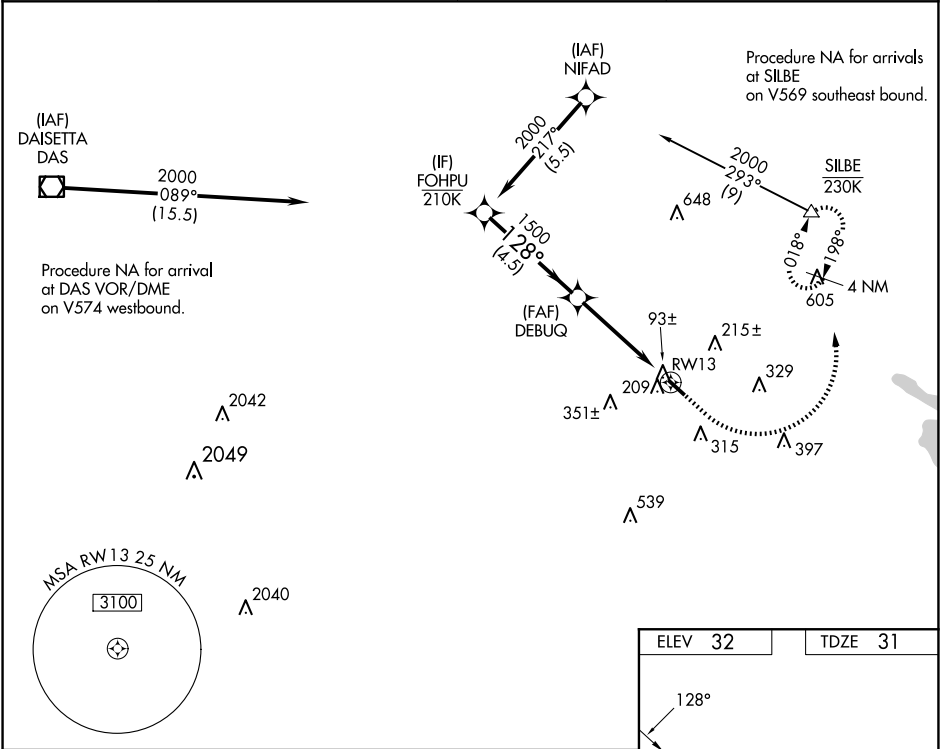
WAAS CH 49141 W13A	APP CRS 128°	Rwy Idg 3668 TDZE 31 Apt Elev 32
--	------------------------	---

RNAV (GPS) RWY 13

BEAUMONT MUNI (BMT)

RNP APCH GPS.	MISSED APPROACH: (Do not exceed 230K until SILBE) Climb to 600 then climbing left turn to 2000 direct SILBE and hold.
▼ For uncompensated Baro-VNAV systems, LNAV/VNAV NA below -15°C or above 54°C. Circling Rwy 31 NA at night. Rwy 13 helicopter visibility reduction below ¾ SM NA.	

AWOS-3PT 118.425	HOUSTON APP CON 121.3 377.1	CLNC DEL 121.75	UNICOM 123.0 (CTAF) 0
----------------------------	---------------------------------------	---------------------------	--



SC-5, 10 JUL 2025 to 07 AUG 2025

SC-5, 10 JUL 2025 to 07 AUG 2025