

WAAS CH <b>86225</b> <b>W22A</b>	APP CRS <b>224°</b>	Rwy Idg <b>7500</b> TDZE <b>70</b> Apt Elev <b>70</b>
--	------------------------	---

# RNAV (GPS) RWY 22R

BATON ROUGE METRO, RYAN FLD (BTR)

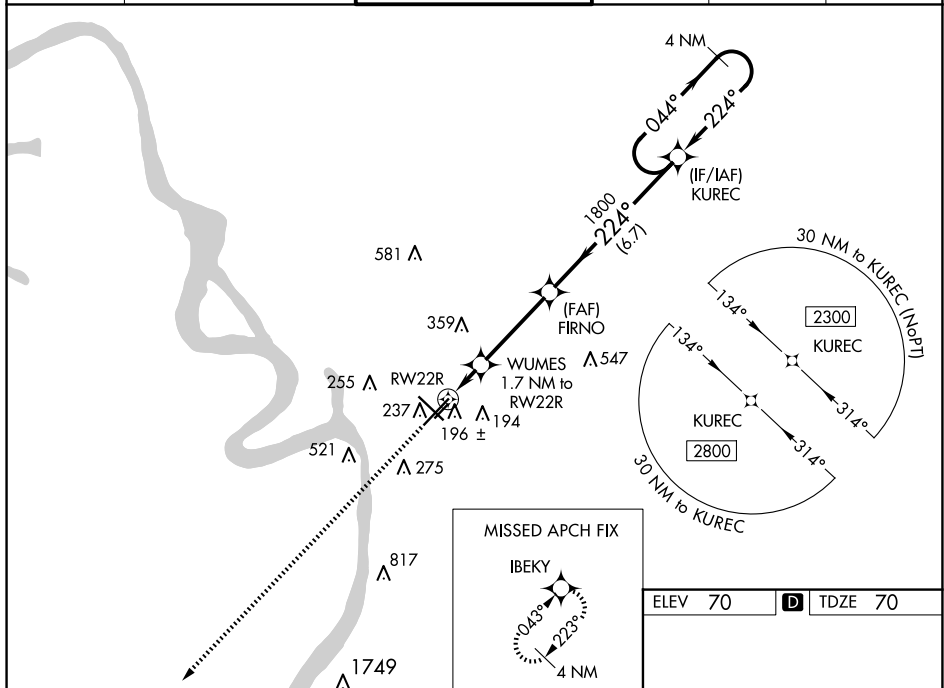
**T** Baro-VNAV NA when using Hammond altimeter setting. For uncompensated Baro-VNAV systems, LNAV/VNAV NA below -5°C (23°F) or above 54°C (130°F). DME/DME RNP-0.3 NA. VDP NA with Hammond altimeter setting. When local altimeter setting not received, use Hammond altimeter setting and increase all DA 91 feet, and all MDA 100 feet; increase LNAV/VNAV all Cats visibility ½ mile, LNAV Cat C/D visibility to RVR 5000, and Circling Cat C/D visibility ¼ mile. For Inop MALSR when using Hammond altimeter setting, increase LPV all Cats visibility to RVR 4500, and LNAV C/D visibility to 1½ mile.

MALSR



**MISSED APPROACH:**  
Climb to 2800 direct  
IBEKY and hold.

ATIS 125.2	BATON ROUGE APP CON ★ 120.3 278.3	RYAN TOWER ★ 118.45 (CTAF) 0 257.8	GND CON 121.9	CLNC DEL 119.4	UNICOM 122.95
---------------	--------------------------------------	---------------------------------------	------------------	-------------------	------------------



ELEV 70	<b>D</b>	TDZE 70
---------	----------	---------

