

LOC/DME I-BTR <u>110.3</u> Chan 40	APP CRS 133°	Rwy Idg 5720 TDZE 67 Apt Elev 70
--	------------------------	---

ILS or LOC RWY 13

Baton Rouge Metro, Ryan FLD (BTR)

T
A

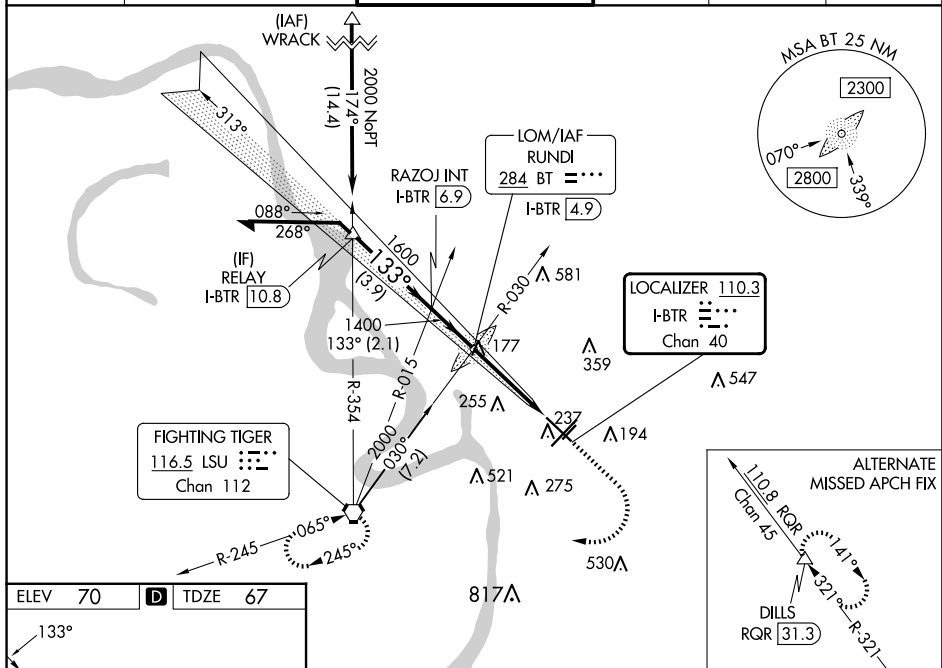
For inop MALSR when using Hammond altimeter setting, increase S-ILS 13 all Cats visibility to $\frac{3}{8}$ mile, and S-LOC 13 visibility to $\frac{1}{8}$ mile. VDP NA with Hammond altimeter setting. When local altimeter setting not received, use Hammond altimeter setting and increase all DA 91 feet and all MDA 100 feet, increase S-LOC 13 Cats C and D visibility $\frac{1}{4}$ mile, increase Circling Cats C and D visibility $\frac{1}{4}$ mile. For inop MALSR, increase S-LOC 13 Cats C and D to $\frac{1}{8}$ mile.

MALSR

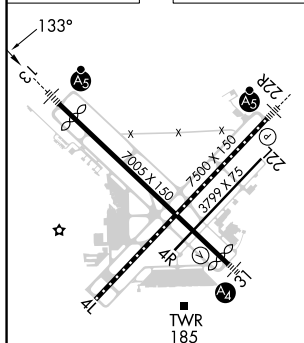


MISSED APPROACH:
Climb to 700 then
climbing right turn to
2000 direct LSU
VORTAC and hold.

ATIS 125.2	BATON ROUGE APP CON ★ 120.3 278.3	RYAN TOWER ★ 118.45 (CTAF) 0 257.8	GND CON 121.9	CLNC DEL 119.4	UNICOM 122.95
----------------------	---	--	-------------------------	--------------------------	-------------------------



ELEV	70	D	TDZE	67
------	----	----------	------	----



TDZ/CL Rwy 22R
HIRL Rwy 13-31 and 4L-22R **L**
MIRL Rwy 4R-22L

FAF to MAP 3.7 NM

Knots	60	90	120	150	180
Min:Sec	3:42	2:28	1:51	1:29	1:14

Baton Rouge, Louisiana

Amdt 28 20AUG15

Remain
within 10 NM

RUNDI LOM/INT
I-BTR 4.9

2000-

GS 3.00°

TCH 57

CATEGORY

FILE 12

S-ILS 13

S-LOC 1

CIRCLIN

CIRCLIN

30°32'N-91°09'W

Baton Rouge Metro, Ryan FLD (BTR)

ILS or LOC RWY 13