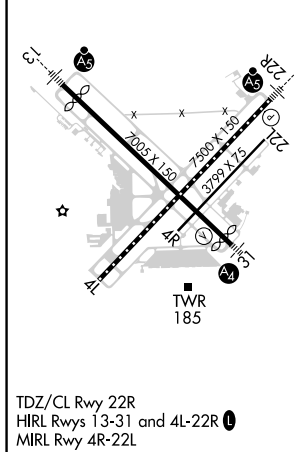
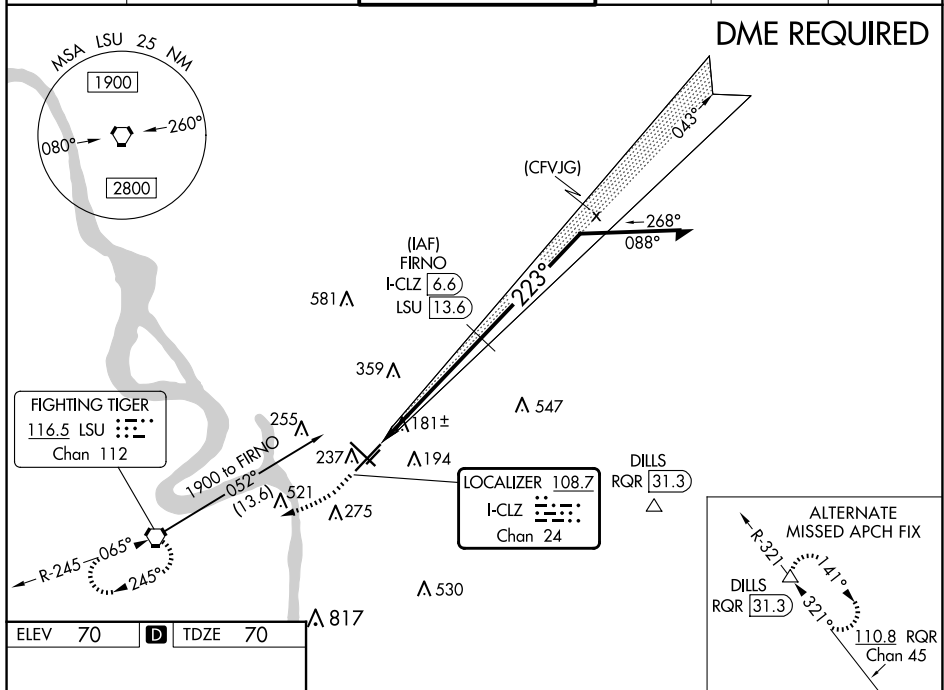


**ILS RWY 22R (SA CAT I & II)**  
BATON ROUGE METRO, RYAN FLD (BTR)

<div><div></div><div></div></div>	SA CAT I: Requires specific OPSPEC, MSPEC, or LOA approval and use of HUD to DH.			<div>MALSRR</div> <div><div><div></div><div></div><div></div><div></div><div></div><div></div></div><div></div></div>	MISSED APPROACH: Climb to 600 then climbing right turn to 2000 direct LSU VORTAC and hold.	
	SA CAT II: Reduced lighting: Requires specific OPSPEC, MSPEC, or LOA approval and use of autoland or HUD to touchdown. SA CAT I/II: Procedure NA when tower closed.					
ATIS 125.2	BATON ROUGE APP CON ★ 120.3 278.3		RYAN TOWER ★ 118.45 (CTAF) 0 257.8	GND CON 121.9	CLNC DEL 119.4	UNICOM 122.95

[illegible]

SC-4, 10 JUL 2025 to 07 AUG 2025