


WAAS CH 82307 W15A	APP CRS 150°	Rwy Idg 11440 TDZE 192 Apt Elev 192
--	------------------------	--


RNAV (GPS) RWY 15

BANGOR INTL (BGR)



ASR

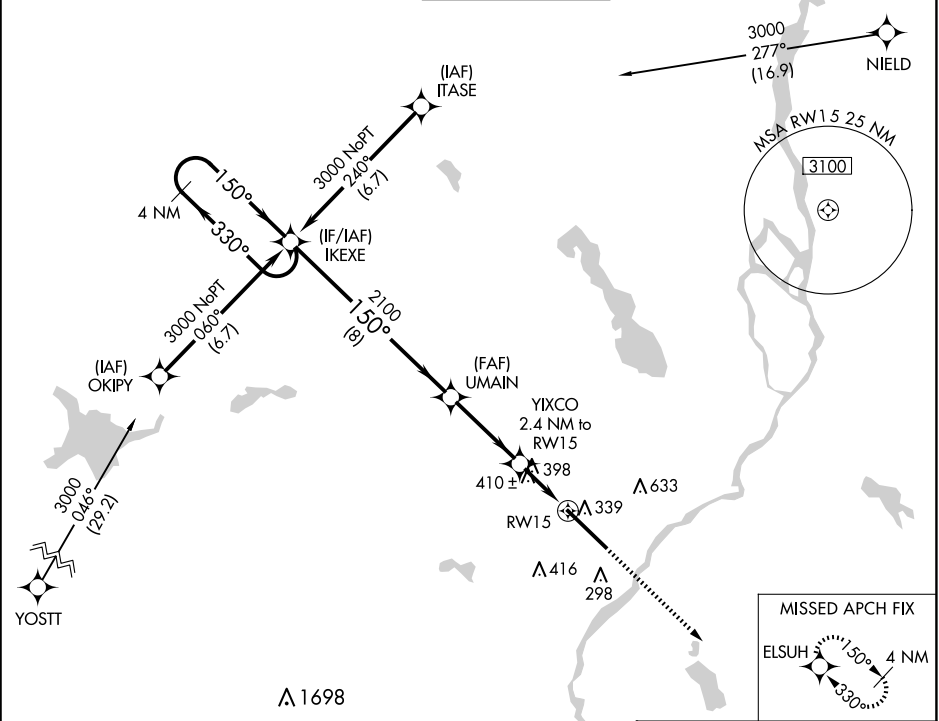
For uncompensated Baro-VNAV systems, LNAV/VNAV NA below -19°C (-2°F) or above 54°C (130°F). DME/DME RNP-0.3 NA. For inoperative ALS, increase LPV Cat E visibility to RVR 4000, LNAV/VNAV all Cats visibility to RVR 6000, and LNAV Cats C/D/E visibility to 1½ SM. Circling NA NE of Rwy 15-33.



ALSF-2

MISSED APPROACH:
Climb to 3000 direct
ELSUH and hold.

ATIS 127.75	BANGOR APP CON 118.925 239.3	BANGOR TOWER 120.7 233.7	GND CON 121.9 348.6	CLNC DEL 135.9 348.6
-----------------------	--	------------------------------------	-------------------------------	--------------------------------



4 NM Holding Pattern

VGSI and RNAV glidepath not coincident (VGSI Angle 3.00/TCH 55).

3000

IKEXE

UMAIN

YIXCO

2.4 NM to RW15

1.3 NM to RW15

ELSUH

* LNAV only.

GP 3.00° TCH 50

330°

150°

150°

2100

1000*

8 NM

3.4 NM

1.1

1.3

CATEGORY	A	B	C	D	E
LPV DA	392/24 200 (200-½)				
LNAV/VNAV DA	541/40 349 (400-¾)				
LNAV MDA	660/24 468 (500-½)		660/50 468 (500-1)		
CIRCLING	660-1 468 (500-1)	720-1 528 (600-1)	740-1½ 548 (600-1½)	820-2 628 (700-2)	880-2½ 688 (700-2½)

ELEV 192

TDZE 192

150°

0.4° DOWN

11440 X 200

TWR 322

327

TDZ/CL Rwy 15

HIRL Rwy 15-33