

24305

LOC/DME I-JVH <u>109.5</u> Chan 32	APP CRS 150°	Rwy Idg 11440 TDZE 192 Apt Elev 192
--	------------------------	--

ILS Y RWY 15 (CAT II & III)
BANGOR INTL (BGR)

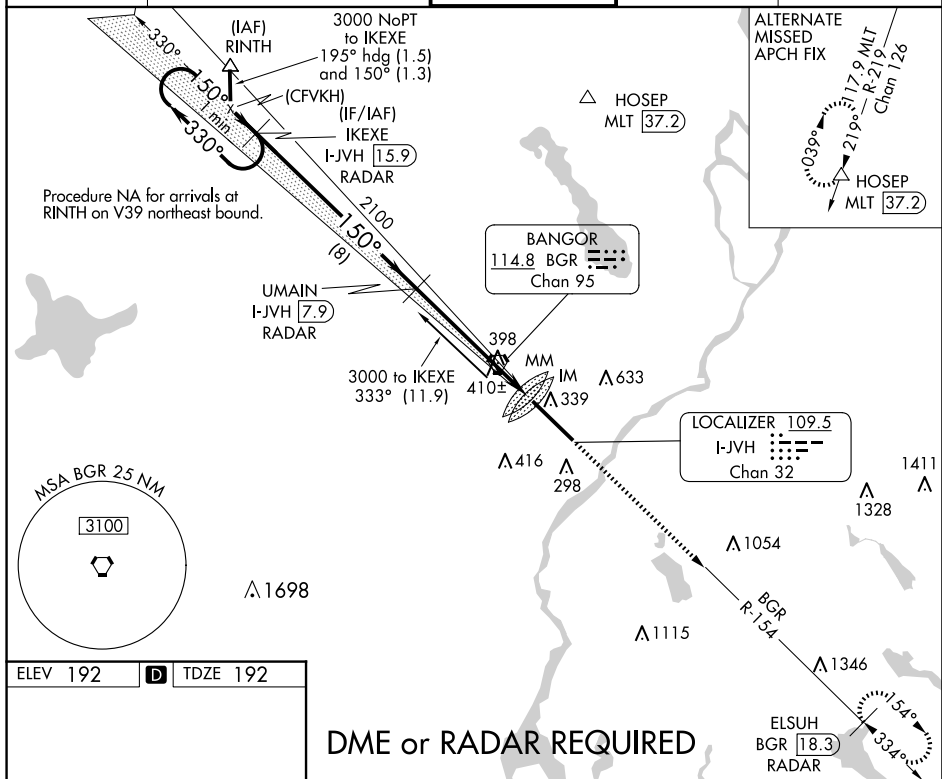


DME or RADAR required.

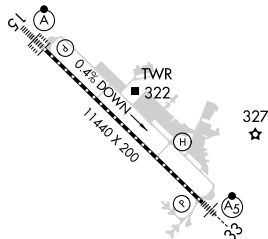
ALSF-2

MISSED APPROACH: Climb to 3000 on heading 150° and BGR VORTAC R-154 to ELSUH/BGR 18.3 DME/RADAR and hold.

ATIS	BANGOR APP CON	BANGOR TOWER	GND CON	CLNC DEL
127.75	118.925 239.3	120.7 233.7	121.9 348.6	135.9 348.6



ELEV 192	D	TDZE 192
----------	----------	----------



TDZ/CL Rwy 15
HIRL Rwy 15-33

BANGOR, MAINE
Amdt 7 27APR17

DME or RADAR REQUIRED

VGSI and ILS glidepath not coincident
(VGSI Angle 3.00/TCH 55).

One Minute Holding Pattern

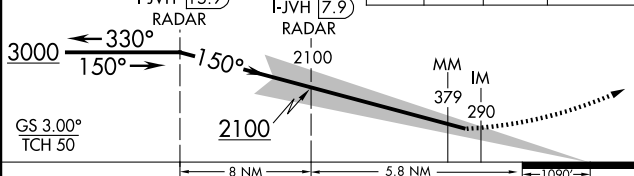
IKEXE
I-IVH 159

U MAIN

3000
↑

BGR
R-15.

ELSUH
BGR 18.3
RADAR



CATEGORY	A	B	C	D
S-ILS 15	CAT II RA 113/12 100 DA 292			
S-ILS 15	CAT III RVR 06			

CATEGORY II & III ILS - SPECIAL AIRCREW
& AIRCRAFT CERTIFICATION REQUIRED

BANGOR INTL (BGR)

44°48'N-68°50'W

ILS Y RWY 15 (CAT II & III)

NE-1, 10 JUL 2025 to 07 AUG 2025