

BANGOR, MAINE

HI-ILS Z or LOC Z RWY 15

LOC/DME I-JVH 109.5 Chan 32	APCH CRS 150°	Rwy Idg 11,440 TDZE 192 Arpt Elev 192
---	-------------------------	--

AL-39 [USAF]

BANGOR INTL (KBGR)

DME required.

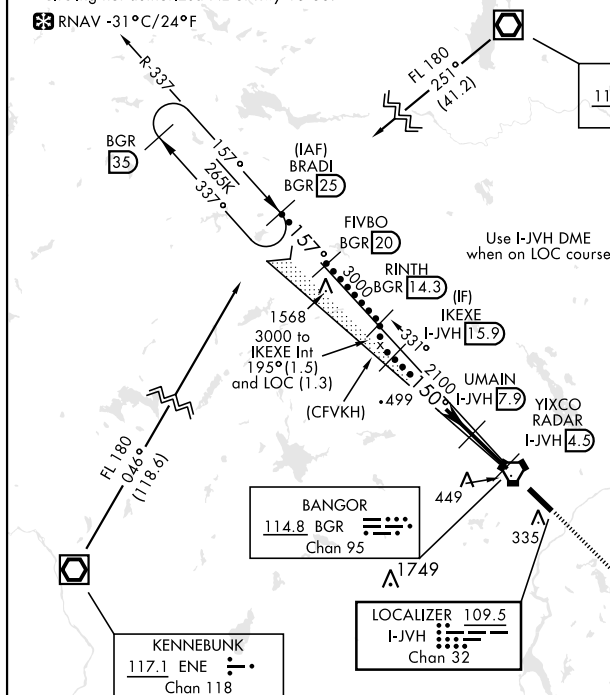
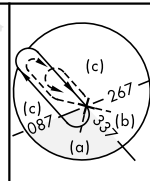
ALSF-2

MISSED APPROACH: Climb to 3000 via heading 150° and BGR VORTAC R-154 to ELSUH (R-154/18.3 DME) and hold.

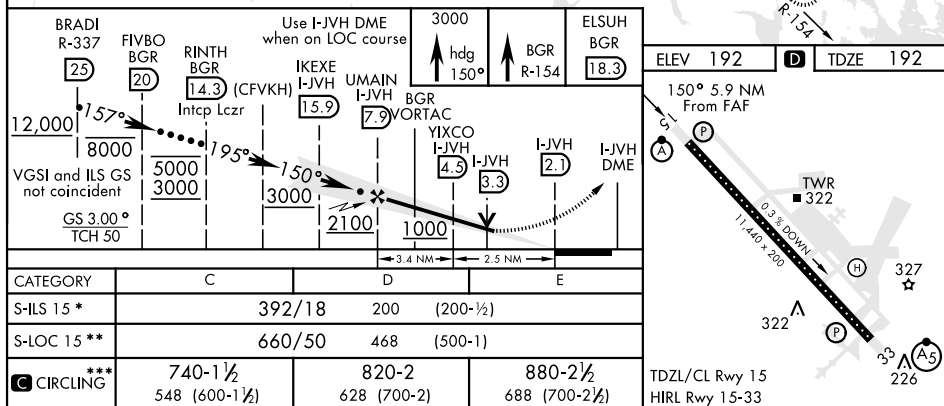
T * When ALS inop, increase CAT E RVR to 40.
** When ALS inop, increase CAT CDE vis to 1 $\frac{3}{8}$ miles.

ATIS 127.75	APP CON 118.925 239.3	TOWER 120.7 233.7	GND CON 121.9 348.6	ASR
----------------	--------------------------	----------------------	------------------------	-----

*** Circling not authorized NE of Rwy 15-33.

 RNAV -31°C/24°F

EMERG SAFE ALT 100 NM 7500



BANGOR, MAINE

44°48'N-68°50'W

BANGOR INTL (KBGR)

Amdt 2 02DEC21

HI-ILS Z or LOC Z RWY 15