

TACAN RWY 21

TACAN COF Chan 97	APCH CRS 217°	Rwy Idg TDZE 7 Arpt Elev 8
----------------------	------------------	----------------------------------

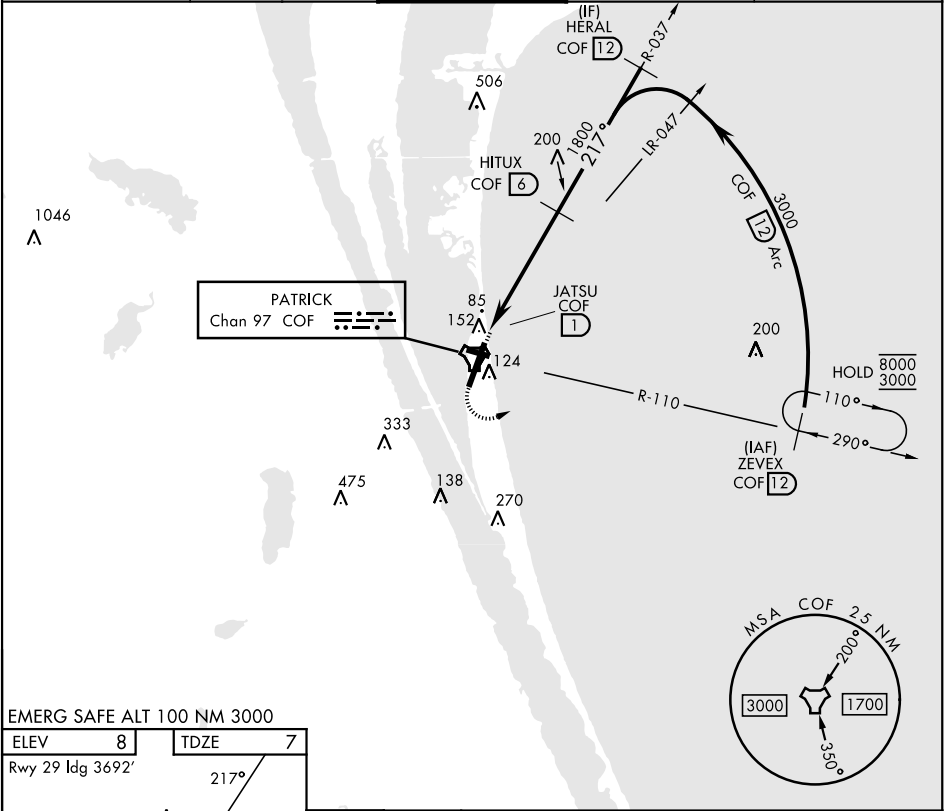
[USAF]

PATRICK SFB (KCOF)

▼ * When Circling to Rwy 29 at night, operational VGSI required, remain on or above VGSI glidepath until threshold. Circling not authorized NW of Rwy 3-21.

MISSED APPROACH: Climb to 900, then climbing left turn to 3000 to intercept the COF TACAN R-110 to ZEVEV and hold.

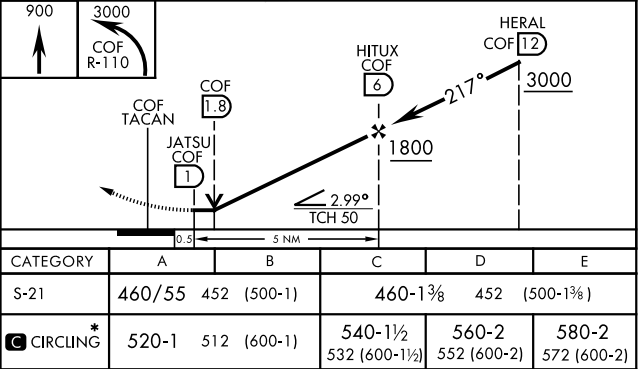
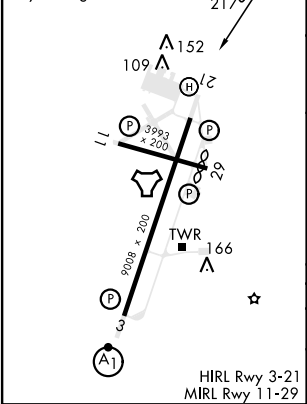
ATIS ★ 119.175 273.5	ORLANDO APP CON ★ 132.65 281.425	TOWER ★ 133.75 269.375	GND CON ★ 124.35 335.8	CLNC DEL ★ 118.4 289.4
-------------------------	-------------------------------------	---------------------------	---------------------------	---------------------------



EMERG SAFE ALT 100 NM 3000

ELEV 8	TDZE 7
--------	--------

Rwy 29 Idg 3692'



CATEGORY	A	B	C	D	E
S-21	460/55	452 (500-1)	460-1 3/8	452 (500-1 3/8)	
CIRCLING *	520-1	512 (600-1)	540-1 1/2 532 (600-1 1/2)	560-2 552 (600-2)	580-2 572 (600-2)

TACAN RWY 21

SE-3, 10 JUL 2025 to 07 AUG 2025

SE-3, 10 JUL 2025 to 07 AUG 2025