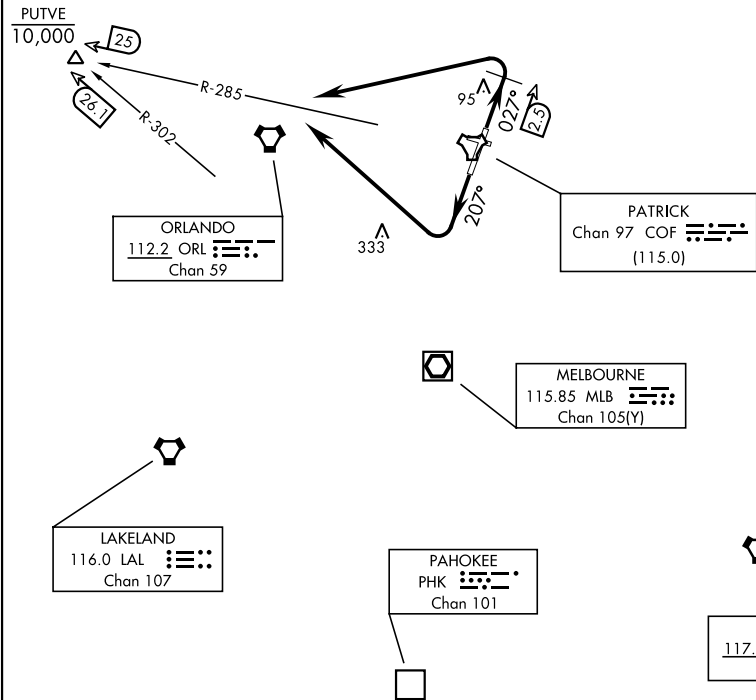


ATIS ★		DME required		[USAF]		Rwy	Knots	60	120	180	240	300	360
119.175 273.5						03/21	V/V(fpm)	210	420	630	840	1050	1260
CLNC DEL ★						Minimum Climb Rate to 500							
118.4 289.4													
GND CON ★													
124.35 335.8													
TOWER ★													
133.75 269.375													
ORLANDO DEP CON ★													
132.65 281.425													

TOP ALTITUDE

2000



NOTE: Chart not to scale.

### DEPARTURE ROUTE DESCRIPTION

Expect clearance to filed altitude/flight level 10 minutes after departure.

**TAKEOFF RWY 03:** Climb on hdg 027° to COF TACAN 2.5 DME, then left turn to intercept COF R-285 to cross PUTVE (COF 25 DME/MLB VOR/DME 26.1 DME) at or below 10,000, maintain 2000 or higher as assigned.

**TAKEOFF RWY 21:** Climb on hdg 207°, then right turn to intercept COF TACAN R-285 to cross PUTVE (COF 25 DME/MLB VOR/DME 26.1 DME) at or below 10,000, maintain 2000 or higher as assigned.