

COCOA BEACH, FLORIDA

RNAV (GPS) RWY 3

APCH CRS 027°	Rwy Idg 9008 TDZE 5 Arpt Elev 8
-------------------------	--

- (USAF)

PATRICK SFB (KCOF)

RNP APCH-GPS

T * When ALS inop, increase CAT AB RVR to 55, vis to 1 mile; CAT CD vis to 1 3/8 miles.
** Circling not authorized NW of RWY 3-21.

ALSF-1

MISSED APPROACH: Climb to 600 then climbing right turn to 3000 direct ZEVEX and hold.

A1

ATIS★
119.175 273.5

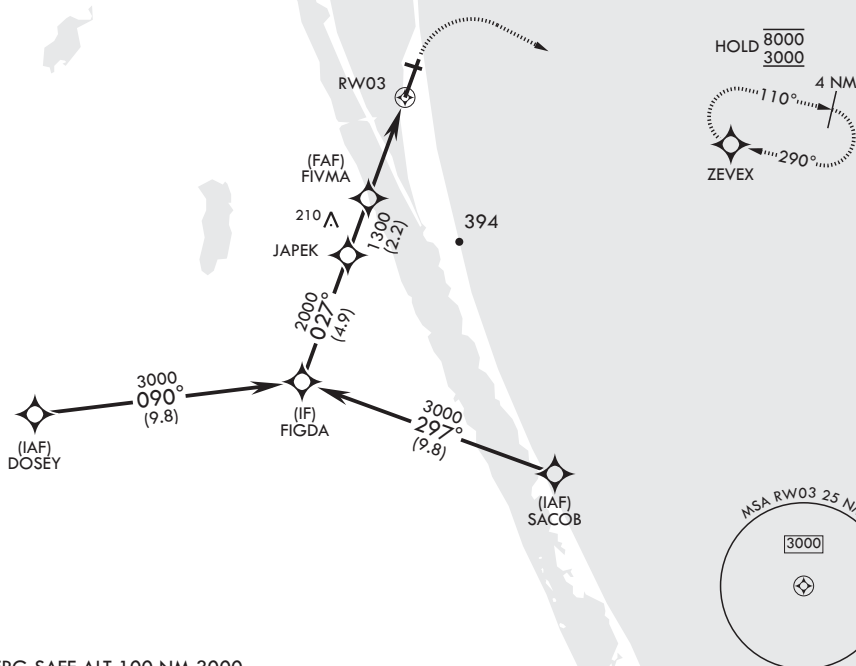
ORLANDO APP CON/DEP CON★
132.65 281.425

TOWER★
133.75 269.375

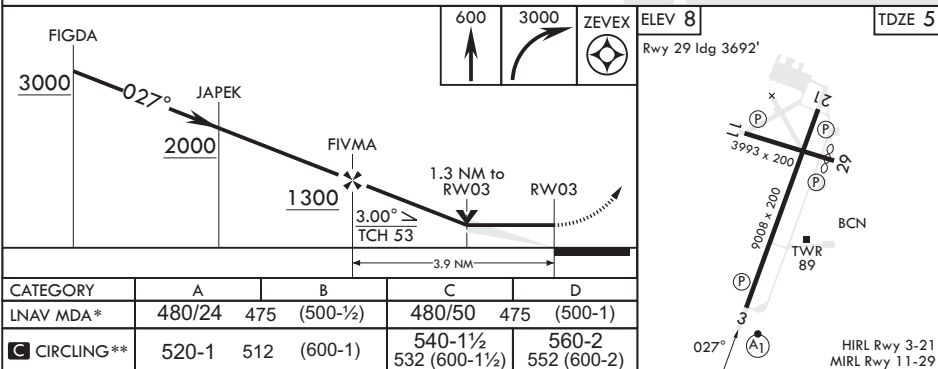
GND CON★
124.35 335.8

CLNC DEL ★
118.4 289.4

When circling to Rwy 29 at night, operational VGSi required, remain on or above VGSi glidepath until threshold.



EMERG SAFE ALT 100 NM 3000



COCOA BEACH, FLORIDA

28°14'N - 80°37'W

PATRICK SFB (KCOF)

Orig 11JUL24

RNAV (GPS) RWY 3

SE-3, 10 JUL 2025 to 07 AUG 2025