

WAAS CH <b>58118</b> <b>W30A</b>	APP CRS <b>301°</b>	Rwy ldg TDZE <b>7429</b> <b>493</b> Apt Elev <b>510</b>
----------------------------------------	------------------------	------------------------------------------------------------------

RNAV (GPS) RWY 30R  
MEADOWS FLD (BFL)

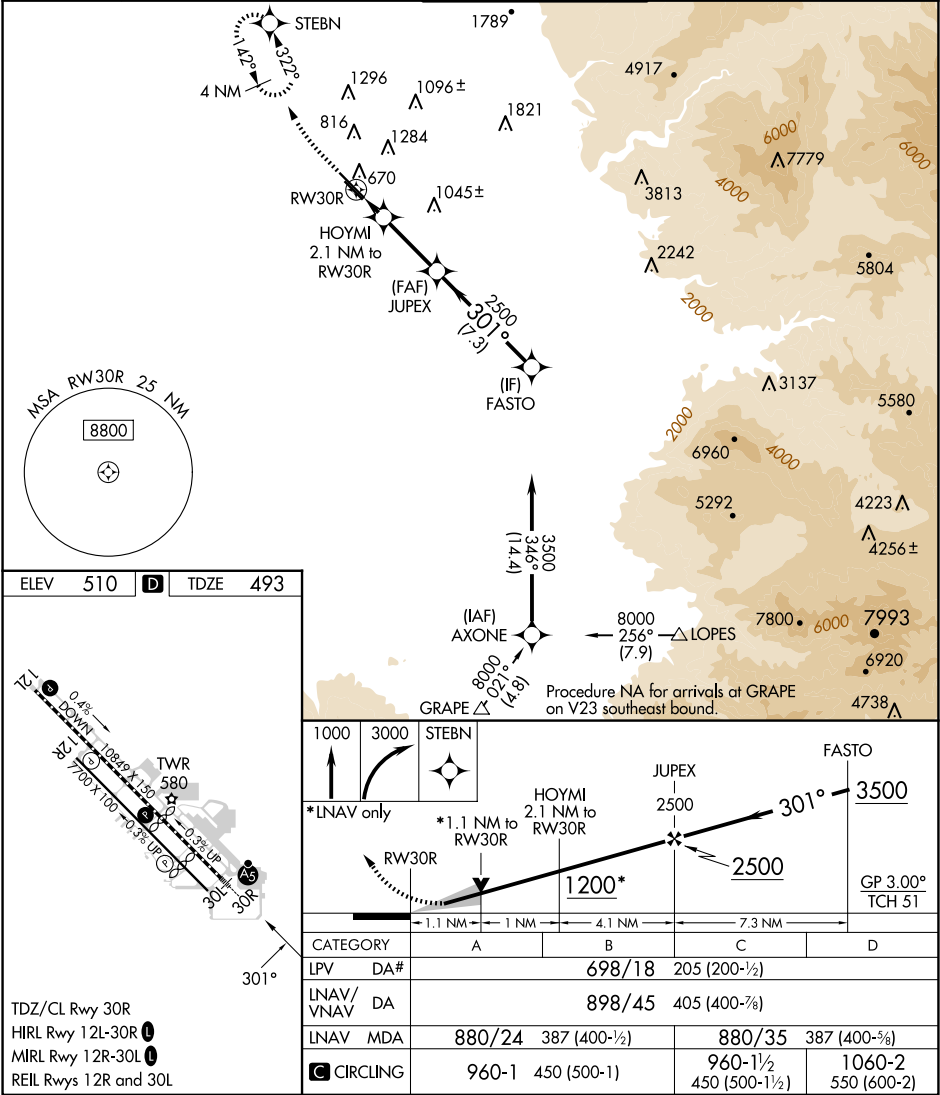
**RNP APCH.**

▼ For uncompensated Baro-VNAV systems, LNAV/VNAV NA below 0°C (32°F) or above 54°C (130°F). Circling NA northeast of Rwy 12L-30R. When local altimeter setting not received, use Porterville altimeter setting: increase LPV DA to 790, LNAV/VNAV DA to 990. Increase LNAV/VNAV all Cats visibilities to 1 ¼ mile; increase all MDA 100 feet and LNAV visibility Cats C and D to RVR 5000. VDP and Baro-VNAV NA when using Porterville altimeter setting. For inop ALS when using Porterville altimeter setting, increase LPV all Cats visibility to RVR 5000 and LNAV Cat C and D visibility to 1%. # RVR 2400 when using Porterville altimeter setting.

**MALSR**

**MISSED APPROACH:**  
Climb to 1000 then climbing right turn to 3000 direct STEBN and hold.

ATIS <b>118.6</b>	BAKERSFIELD APP CON ★ <b>118.8 284.625</b> (SOUTH) <b>118.9 270.3</b> (NORTH)	BAKERSFIELD TOWER ★ <b>118.1</b> (CTAF) <b>0 257.8</b>	GND CON <b>121.7</b>	UNICOM <b>122.95</b>
----------------------	----------------------------------------------------------------------------------	-----------------------------------------------------------	-------------------------	-------------------------



SW-3, 10 JUL 2025 to 07 AUG 2025

SW-3, 10 JUL 2025 to 07 AUG 2025