

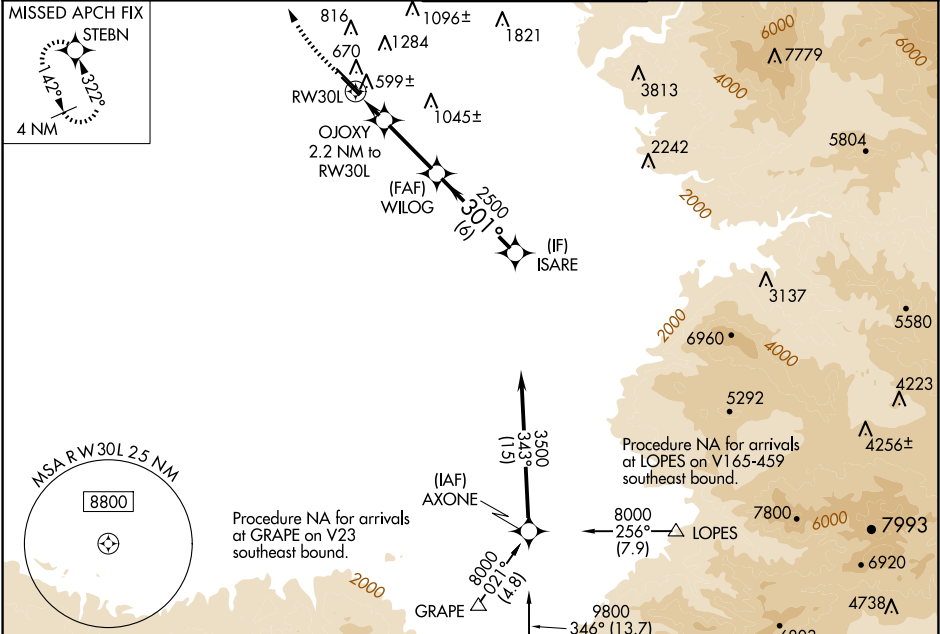
WAAS CH 82440 W30B	APP CRS 301°	Rwy ldg TDZE 6201 484 Apt Elev 510
--	------------------------	--

RNAV (GPS) RWY 30L
MEADOWS FLD (BFL)

⚠ For uncompensated Baro-VNAV systems, LNAV/VNAV NA below -1°C (31°F) or above 54°C (130°F). Circling NA northeast of Rwy 12L-30R.
DME/DME RNP-0.3 NA.

MISSED APPROACH: Climb to 1000 then climbing right turn to 3000 direct STEBN and hold.

ATIS 118.6	BAKERSFIELD APP CON ★ 118.8 284.625 (SOUTH) 118.9 270.3 (NORTH)	BAKERSFIELD TOWER ★ 118.1 (CTAF) 0 257.8	GND CON 121.7	UNICOM 122.95
----------------------	--	---	-------------------------	-------------------------



ELEV 510	D	TDZE 484	Procedure NA for arrival at GRM VORTAC airway radials 297 CW 328.
-----------------	----------	-----------------	---

