

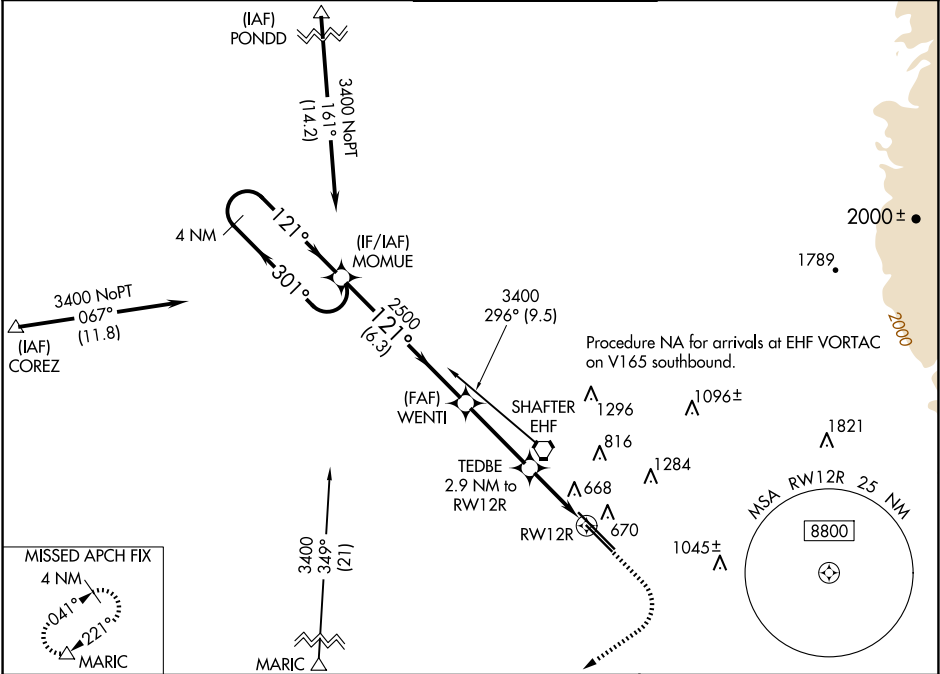
WAAS CH 61040 W12B	APP CRS 121°	Rwy ldg TDZE 7700 488 Apt Elev 510
--	------------------------	--

RNAV (GPS) RWY 12R

MEADOWS FLD (BFL)

▼ For uncompensated Baro-VNAV systems, LNAV/VNAV NA below -1°C (31°F) or above 54°C (130°F). Circling NA northeast of Rwy 12L-30R. DME/DME RNP-0.3 NA.	MISSED APPROACH: Climb to 1000 then climbing right turn to 3500 direct MARIC and hold.
--	--

ATIS 118.6	BAKERSFIELD APP CON ★ 118.8 284.625 118.9 270.3 (SOUTH) (NORTH)	BAKERSFIELD TOWER ★ 118.1 (CTAF) 0 257.8	GND CON 121.7	UNICOM 122.95
----------------------	--	--	-------------------------	-------------------------



VGSI and RNAV glidepath not coincident (VGSI Angle 3.00/TCH 25).		1000	3500	MARIC	ELEV 510	TDZE 488
4 NM Holding Pattern MOMUE		* LNAV only				
GP 3.00° TCH 50		* 1.3 NM to RWY 12R				
6.3 NM		* 1.3 NM to RWY 12R				
3.3 NM		* 1.3 NM to RWY 12R				
1.6 NM		* 1.3 NM to RWY 12R				
1.3 NM		* 1.3 NM to RWY 12R				
CATEGORY	A	B	C	D		
LPV DA	738-3/4 250 (300-3/4)					
LNAV/VNAV DA	969-15/8 481 (500-15/8)					
LNAV MDA	920-1	432 (500-1)	920-11/4	432 (500-11/4)		
CIRCLING	960-1	450 (500-1)	960-11/2	1060-2		
			450 (500-11/2)	550 (600-2)		
						TDZ/CL Rwy 30R
						HIRL Rwy 12L-30R
						MIRL Rwy 12R-30L
						REIL Rwy 12R and 30L

RNAV (GPS) RWY 12R