

WAAS CH <b>78418</b> <b>W12A</b>	APP CRS <b>121°</b>	Rwy Idg <b>10848</b> TDZE <b>510</b> Apt Elev <b>510</b>
--	------------------------	--

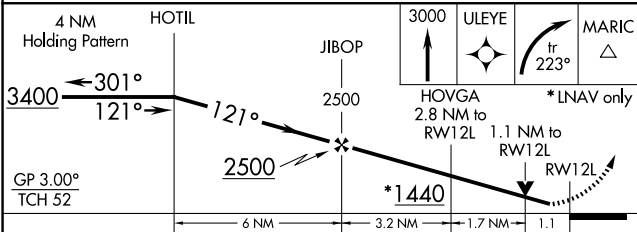
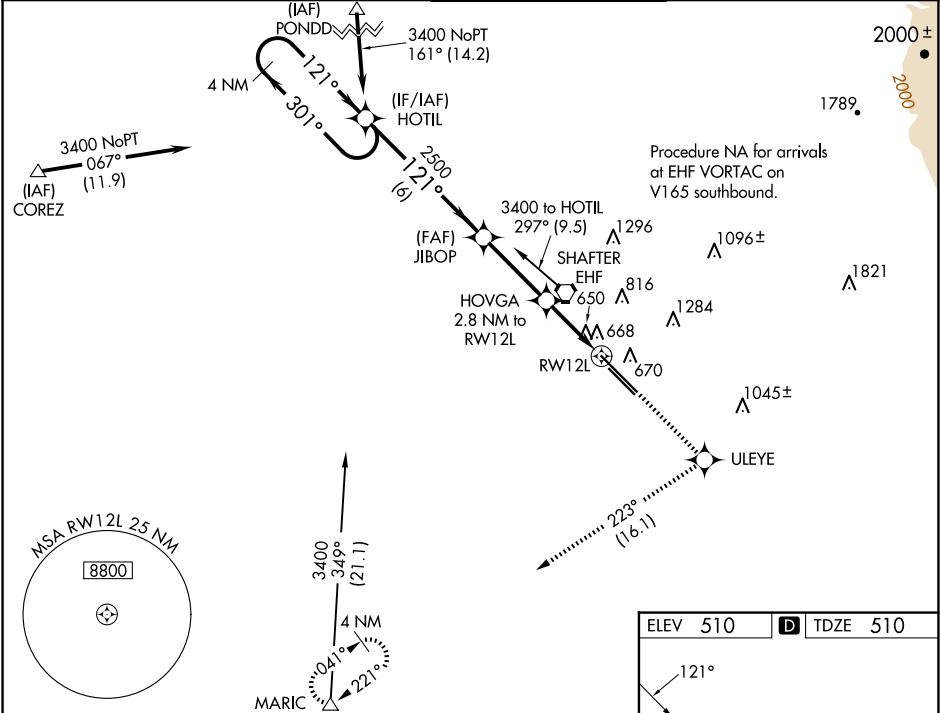
RNAV (GPS) RWY 12L  
MEADOWS FLD (BFL)

RNP APCH.

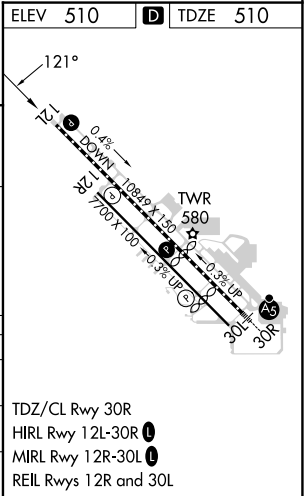
Baro-VNAV NA when using Porterville altimeter setting. For uncompensated Baro-VNAV systems, LNAV/VNAV NA below -16°C or above 54°C. Rwy 12L helicopter visibility reduction below ¾ SM NA. When local altimeter setting not received, use Porterville altimeter setting and increase all DA 92 feet, all MDA 100 feet, increase LPV all Cats, LNAV/VNAV all Cats and LNAV Cats C/D visibility ¼ mile.

MISSED APPROACH:  
Climb to 3000 direct ULEYE and right turn on track 223° to MARIC and hold.

ATIS <b>118.6</b>	BAKERSFIELD APP CON ★ <b>118.8 284.625 118.9 270.3</b> (SOUTH) (NORTH)	BAKERSFIELD TOWER ★ <b>118.1 (CTAF) 257.8</b>	GND CON <b>121.7</b>	UNICOM <b>122.95</b>
----------------------	--	--	-------------------------	-------------------------



CATEGORY	A	B	C	D
LPV DA	760-1	250 (300-1)		
LNAV/VNAV DA	1073-2	563 (600-2)		
LNAV MDA	920-1 410 (500-1)	920-1¼ 410 (500-1¼)		



SW-3, 10 JUL 2025 to 07 AUG 2025

SW-3, 10 JUL 2025 to 07 AUG 2025