

VORTAC CEC	APP CRS	Rwy Idg	4850
109.0	346°	TDZE	59
Chan 27		Apt Elev	61

VOR/DME RWY 36

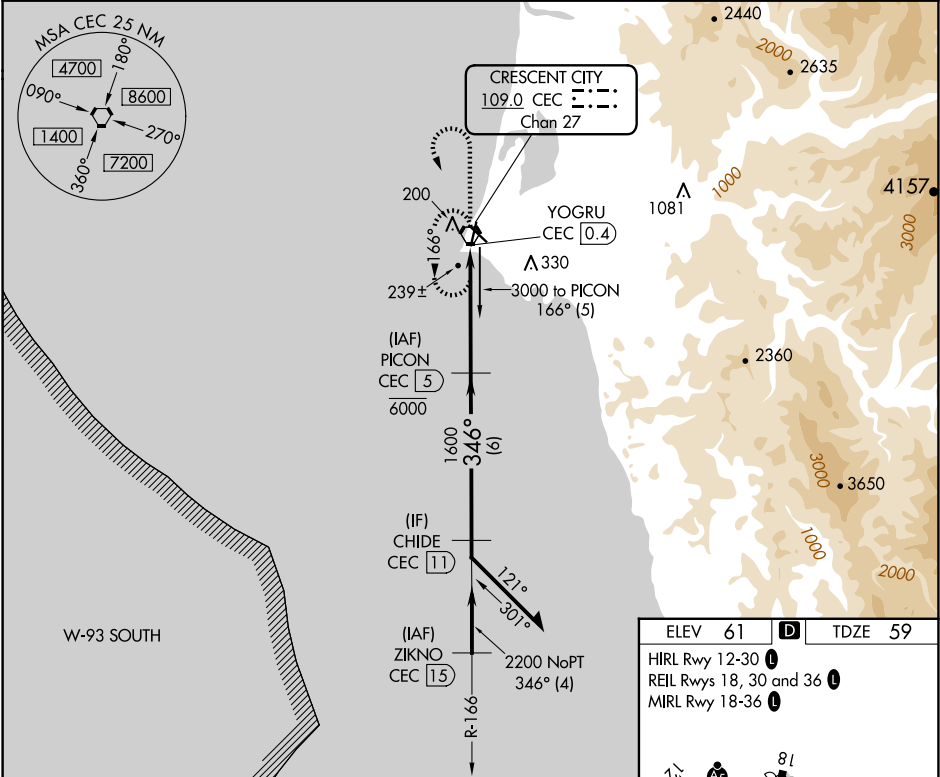
JACK MC NAMARA FLD (CEC)

⚠

When local altimeter setting not received, use Brookings altimeter setting and increase all MDA 100 feet; increase S-36 Cat C/D and Circling Cat D visibilities ¼ mile and Circling Cat C visibility ½ mile. Helicopter visibility reduction below 1 SM NA. Night landing: Rwy 36 operational VGSI required, remain on or above VGSI glidepath until threshold. Night landing: Rwy 18, 30 NA.

MISSED APPROACH: Climb to 1000 then climbing left turn to 3000 direct CEC VORTAC and hold, continue climb-in-hold to 3000.

ASOS 119.925	SEATTLE CENTER 124.85 306.3	UNICOM 122.8 (CTAF) 0
-----------------	--------------------------------	--------------------------



Remain within 10 NM

PICON CEC 5  
6000

2900

166°

346°

1600

3.06°

TCH 58

4.6 NM

YOGRU CEC 0.4

CATEGORY	A	B	C	D
S-36	500-1	441 (500-1)	500-1 <sup>3</sup> / <sub>8</sub>	441 (500-1 <sup>3</sup> / <sub>8</sub> )
CIRCLING	540-1	479 (500-1)	640-1 <sup>1</sup> / <sub>2</sub> 579 (600-1 <sup>1</sup> / <sub>2</sub> )	640-2 579 (600-2)

