

LOC I-CEC	APP CRS	Rwy Idg	5002
108.7	119°	TDZE	60
		Apt Elev	61

ILS or LOC RWY 12

JACK MC NAMARA FLD (CEC)

▼

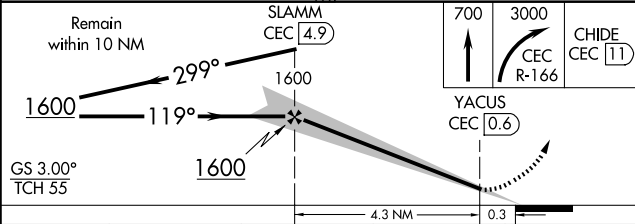
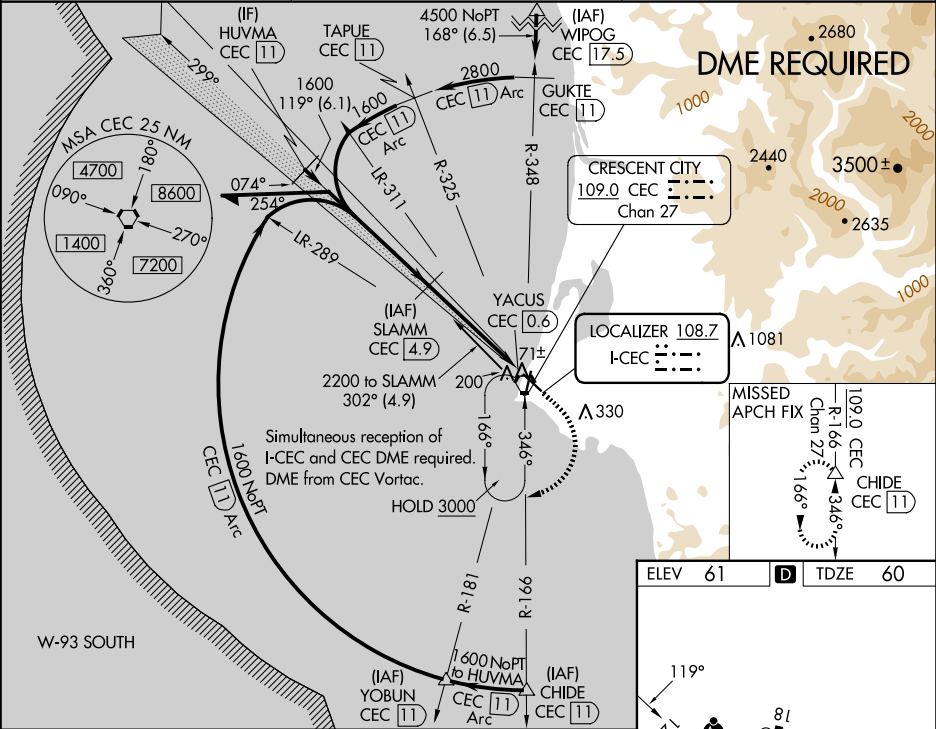
NA

DME required. S-ILS 12: ½ mile visibility authorized with use of FD or AP or HUD to DA. Inop table does not apply to S-ILS 12, except with use of FD or AP or HUD to DA. For inop MALSR, increase S-LOC 12 all Cats visibility ¼ mile. When local altimeter setting not received, use Brookings altimeter setting and increase DA to 407 feet and all MDA 100 feet; increase S-LOC 12 Cat C/D, and Circling Cat D visibilities ¼ mile. For inop MALSR, when using Brookings altimeter setting, increase S-ILS 12 all Cats visibility to 1 mile. Night Landing: Rwy 36 operational VGSJ required, remain on or above VGSJ glidepath until threshold. Circling to Rwy 18, 30 NA at night.

MALSR

MISSED APPROACH:
Climb to 700 then climbing right turn to 3000 on CEC VORTAC R-166 to CHIDE/CEC 11 DME and hold, continue climb-in-hold to 3000.

ASOS	SEATTLE CENTER	UNICOM
119.925	124.85 306.3	122.8 (CTAF) 0



CATEGORY	A	B	C	D
S-ILS 12		310-¾	250 (300-¾)	
S-LOC 12		380-¾	320 (400-¾)	
CIRCLING	540-1	479 (500-1)	640-1½ 579 (600-1½)	640-2 579 (600-2)

ELEV 61

TDZE 60

HIRL Rwy 12-30

REIL Rwys 18, 30 and 36

MIRL Rwy 18-36